

NOTES:

1. Material: Iron/Steel/Richlite
2. Finish: Powdercoat
3. All Hardware to be SS or comparable.
4. Due to casting inconsistencies, all dimensions are nominal.

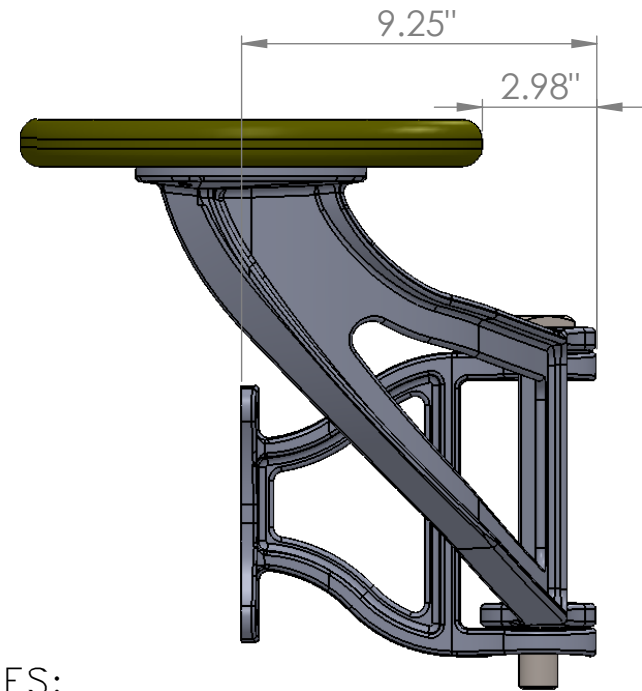
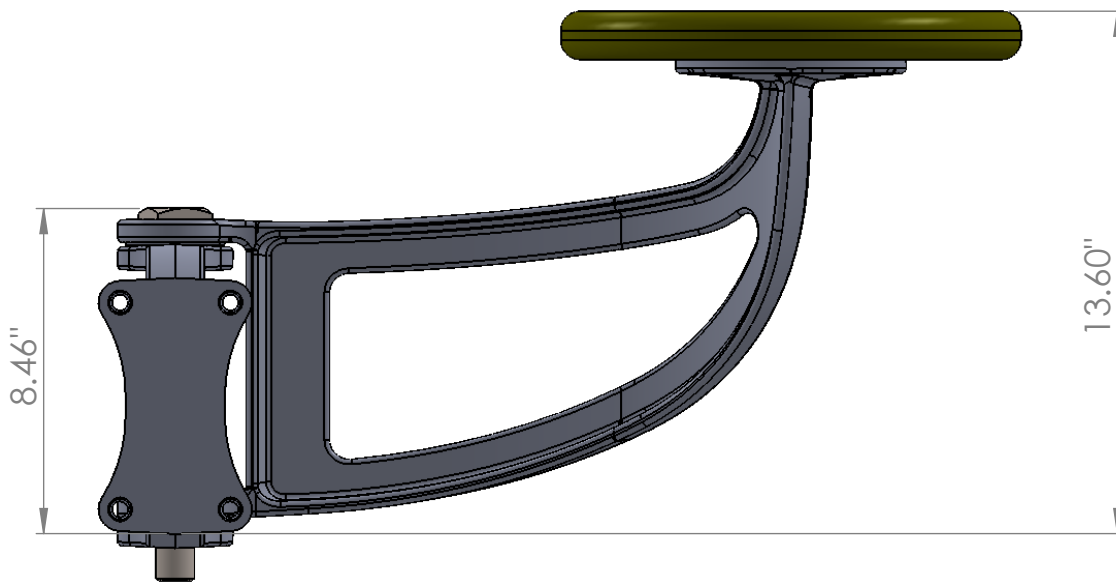
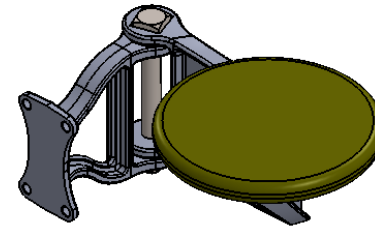
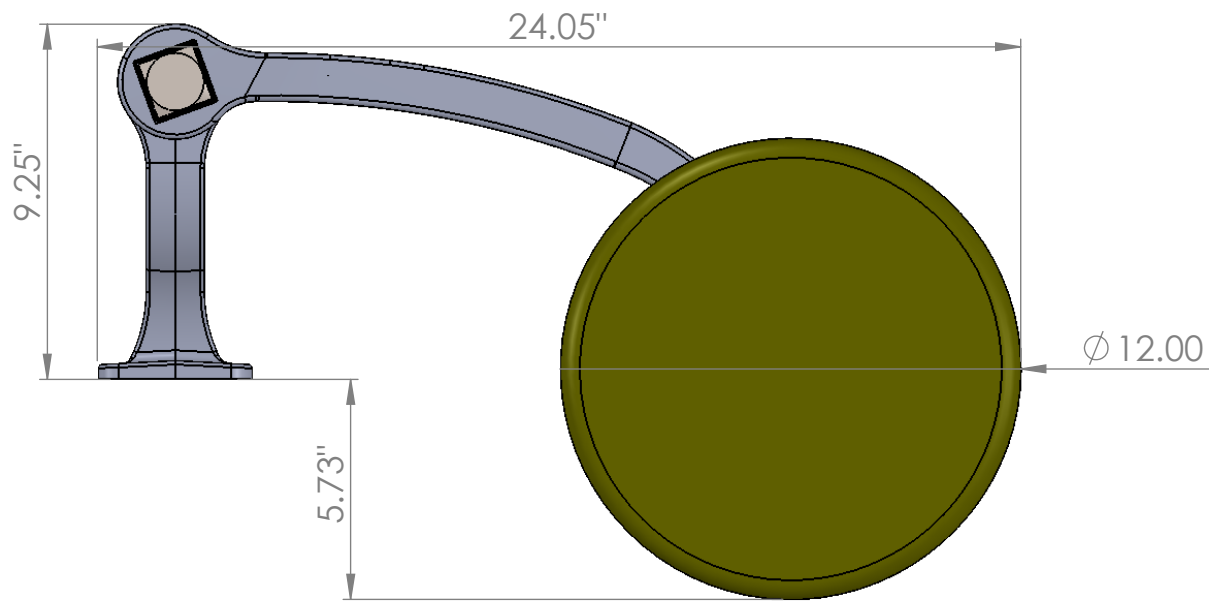


2104 SW 152nd st #4 TEL 206.276.0925
 Burien, WA 98166 FAX 206.257.0318
 www.ironagedesigns.com

Bistro-height Swing Table


job no.:
 drawing no.:

drawn by: JH
 scale: NTS
 date: 9/18/12



NOTES:

1. Material: cast ductile iron
2. Natural finish
3. Due to casting inconsistencies all dimensions are nominal

 **IRON AGE** 2104 SW 152nd st #4 TEL 206.276.0925
DESIGNS Burién, WA 98166 FAX 206.257.0318
 www.ironagedesigns.com

12" Swing Seat

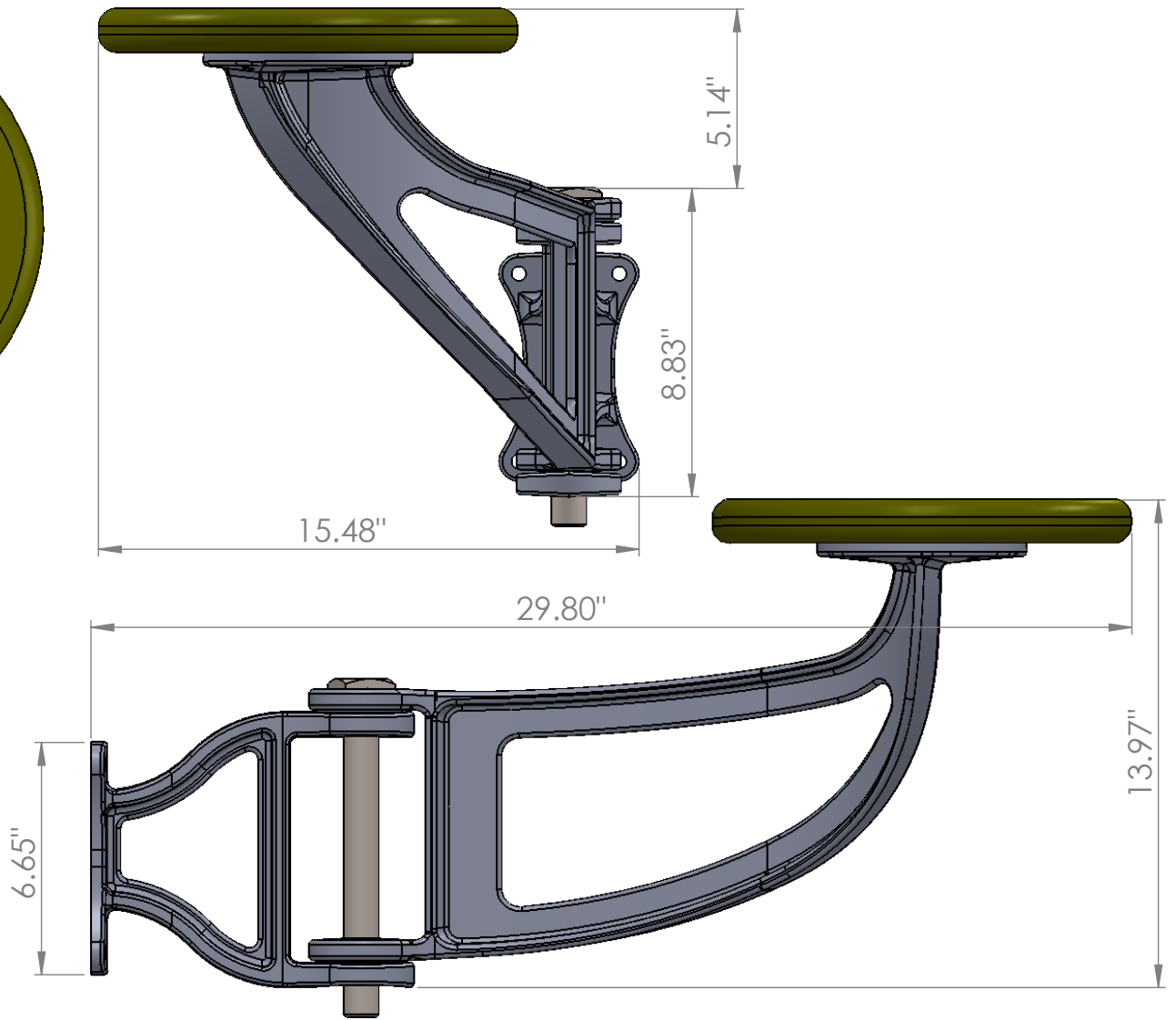
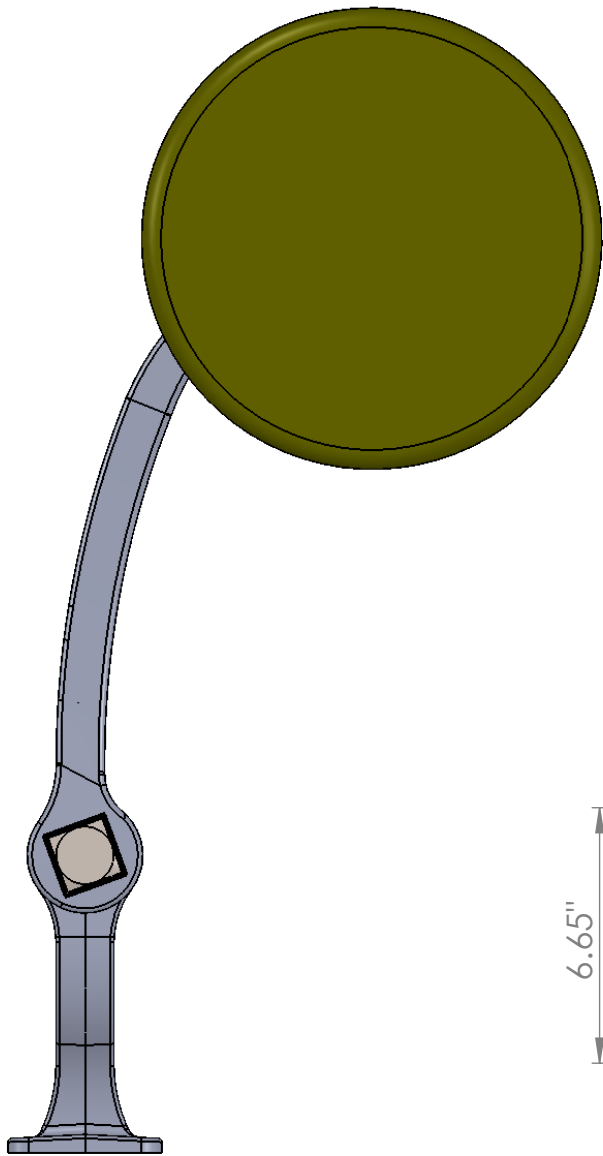
JOB NO.

Drawn by: JH

DWG. NO.

Date: 3/9/12

Scale: NTS



NOTES:

1. Material: cast ductile iron
2. Natural finish
3. Due to casting inconsistencies all dimensions are nominal

IRON AGE 2104 SW 152nd st #4 TEL 206.276.0925
DESIGNS Burién, WA 98166 FAX 206.257.0318
 www.ironagedesigns.com

12" Swing Seat

JOB NO.
 DWG. NO.

Drawn by: JH
 Date: 3/9/12
 Scale: NTS