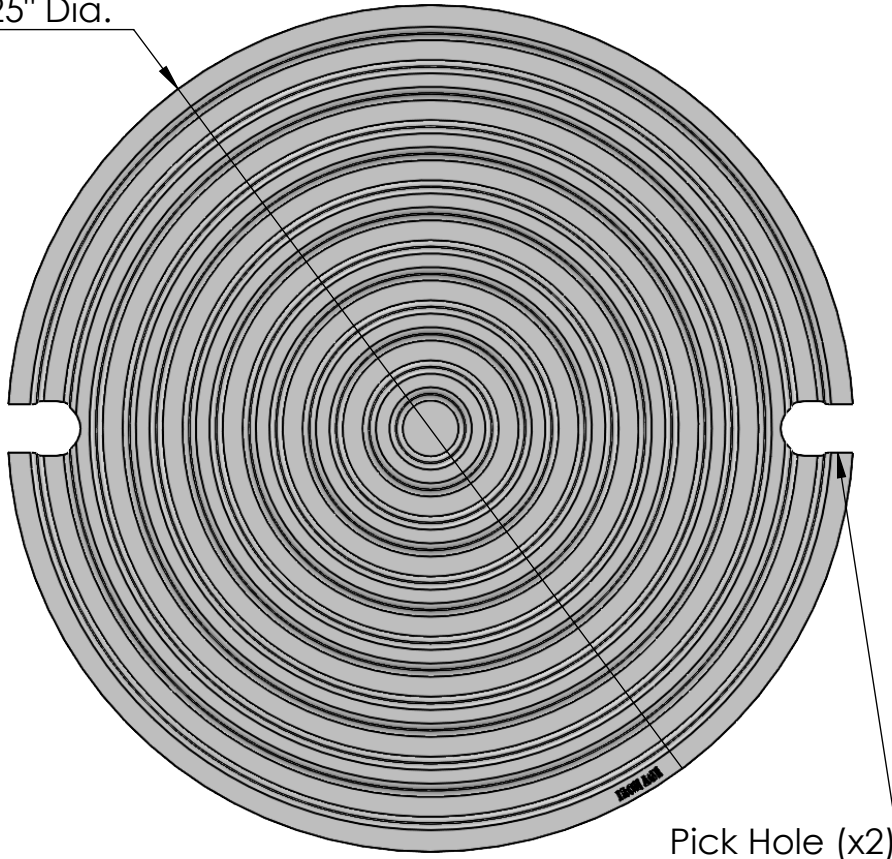


**TOP VIEW**  
scale 1:2

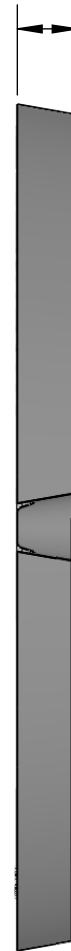
8.8125" Dia.



Pick Hole (x2)

**SIDE VIEW**  
scale 1:2

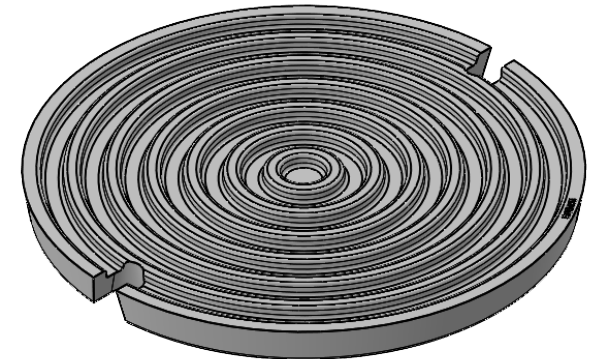
0.625"  
EDGE



**CASTING ID**  
scale 1:3



**ISO VIEW**  
scale 1:3




**NOTES:**

1. ADA Compliant: SOLID.
2. Ships in pieces: 1
3. Due to casting inconsistencies, all dimensions are nominal.

Made in USA ©2023 Iron Age Designs

**Bullseye 9" Dia. Access Cover - Solid**

 <b>IRON AGE</b> <b>DESIGNS</b> Telephone 206.276.0925 www.ironagegrates.com	<b>Material:</b> Ductile Iron 65-45-12	<b>Weight:</b> 7.90 lbs.	<b>Free Drain Area:</b> N/A in/sq., or N/A %	<b>By:</b> MS <b>Checked:</b> MS <b>Date:</b> 9-20-23
	<b>Finish:</b> Raw	<b>Edge:</b> 0.625"	<b>Flow Rate:</b> N/A GPM, or N/A CuFt./sec.	<b>© Registration:</b> Pending <b>Scale:</b> NTS
	<b>Fits:</b> EJ Foundry Ring Model 3675Z1	<b>Product ID:</b> BEE9dia IMH	<b>Drawing Name:</b> 01_Bul_I_9Dia_AccessCover	