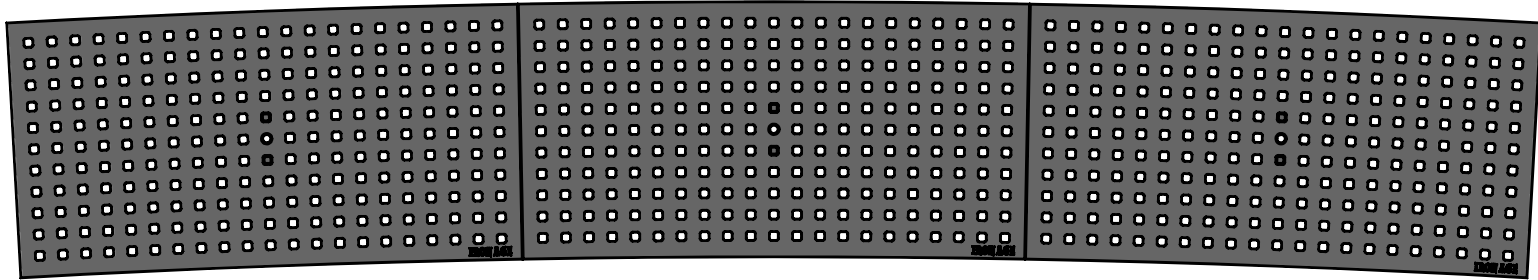
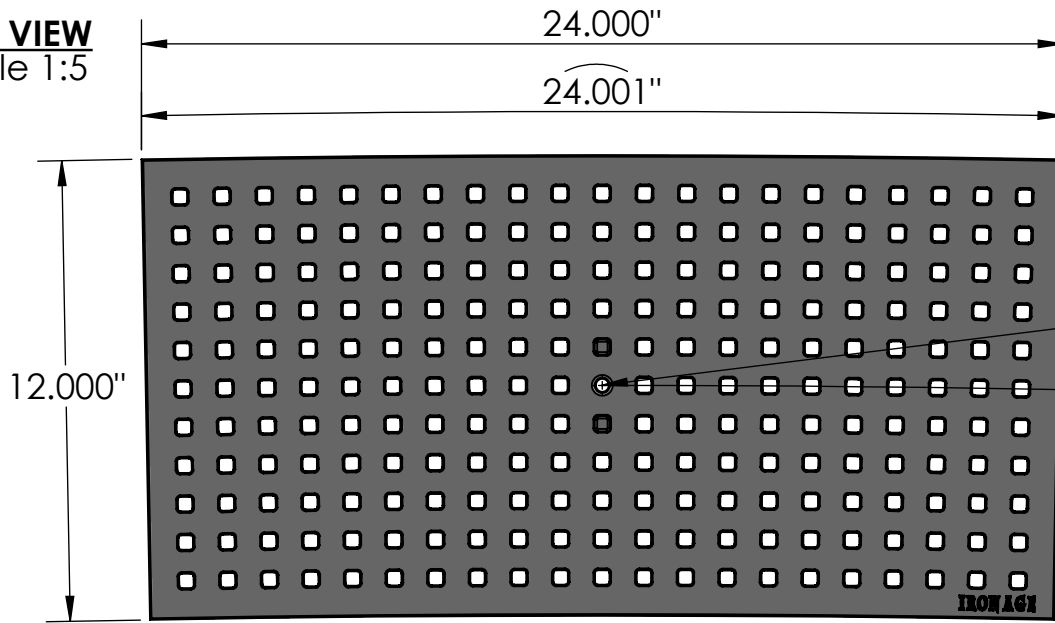


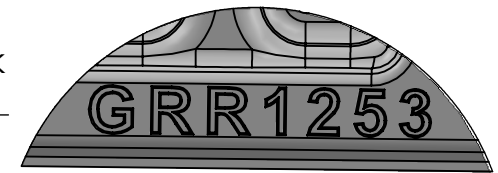
**3 ARRAY**  
scale 1:9



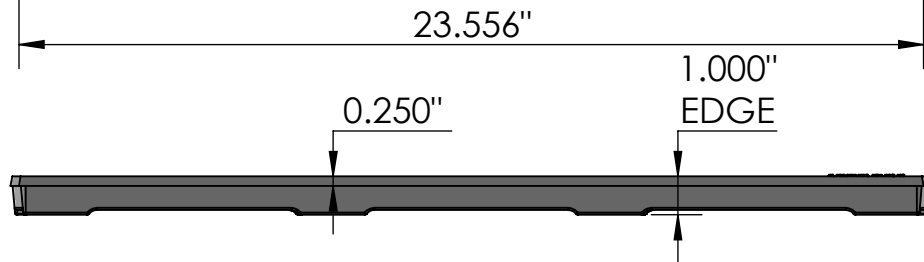
**TOP VIEW**  
scale 1:5



**CASTING-ID**  
scale 1:2

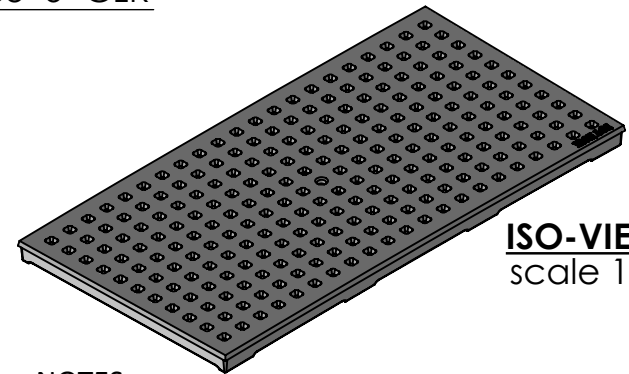


**SIDE VIEW**  
scale 1:5



1/4"-20  
Counter Sunk  
STD-Bolt

53'-6" CLR




**ISO-VIEW**  
scale 1:8

**NOTES:**

1. ADA Compliant: No thru openings greater than 1/2".
2. Ships in pieces: 1
3. Due to casting inconsistencies, all dimensions are nominal.

Made in USA ©2021 Iron Age Designs

**Grid 12" x 24" Trench Grate**  
**53'-6" C.L.R**

 <b>IRON AGE DESIGNS</b> Telephone 206.276.0925 www.ironagegrates.com	<b>Material:</b> Ductile Iron 65-45-12	<b>Weight:</b> 31.43 lbs.	<b>Free Drain Area:</b> 31.10 in./sq., or 10.90 %	<b>By:</b> MS <b>Checked:</b> MS <b>Date:</b> 4-23-21
	<b>Finish:</b> Raw	<b>Edge:</b> 1.000"	<b>Flow Rate:</b> 40.74 GPM, or .090 CuFt./sec.	<b>© Registration:</b> Pending <b>Scale:</b> NTS
	<b>Fits:</b> Iron Age Custom Frames SOLD SEPARATELY	<b>Product ID:</b> GRR12-24I9954	<b>Drawing Name:</b> 01_GRR_I_12x53CLR_TrenchGrate	