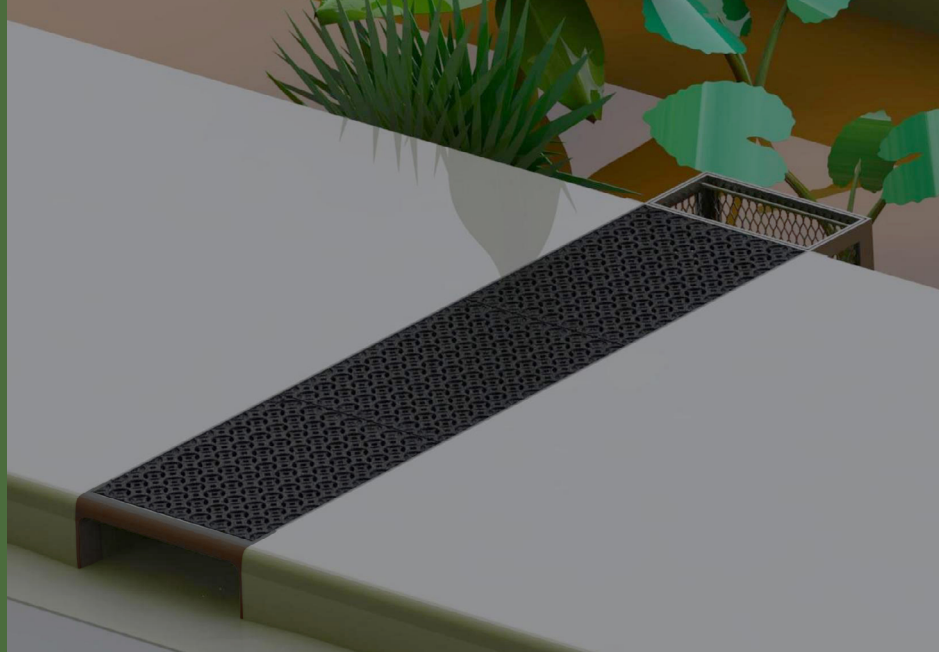


# NEW CURB INLET/ BIOSWALE SYSTEM



As bioswales/rain gardens have become an increasingly popular way to mitigate impacts on water quality and ecosystems, we wanted to make it easier for you to include this category of green infrastructure in your hardscape planning.

We have designed a system with a cast iron curb inlet that interfaces with our standard steel trench frames. The frames cut across the sidewalk, and our decorative grates cover the open runnel where water flows from the street into a bioswale on the other side.

The cast iron curb inlet provides a nicely finished end that is easy to install, and is engineered to take heavy loads.

We have also designed an optional basket/receptacle end, which would prevent larger trash items from littering the retention pit.

To find out more, visit our website or give us a call to discuss your specific project.

IRONAGEGRATES.COM  
877-418-3568

 Made in the USA from Recycled/Recyclable Materials

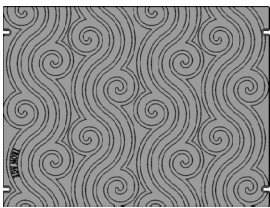
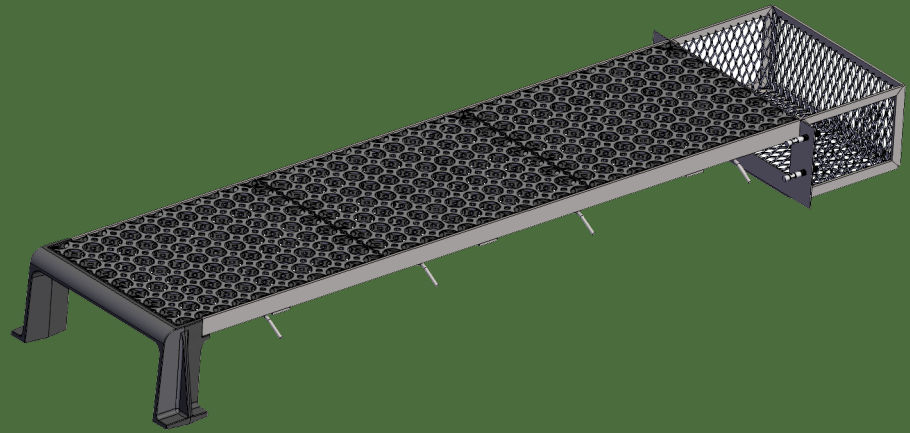


IRON AGE  
DESIGNS

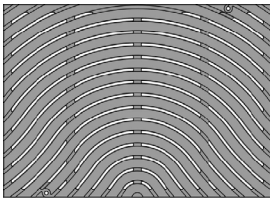
# NEW CURB INLET/BIOSWALE SYSTEM

Iron Age's newly designed system features a heavy-duty cast iron curb inlet that has been engineered to easily connect with our standard trench frames. The first inlet we are releasing fits frames holding our 18" wide grates (patterns below). We can also make custom inlet sizes\* to complement your project requirements and aesthetics.

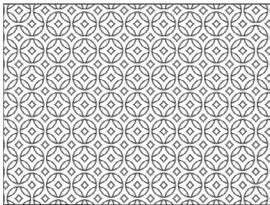
*\*pattern charges may apply*



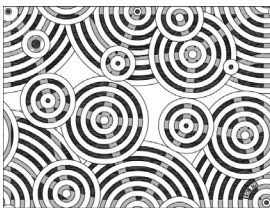
Argo  
(Solid)



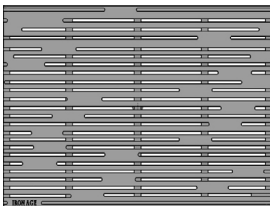
Ground  
Swell



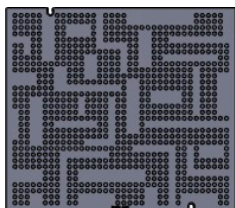
Interlaken



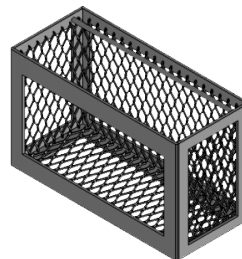
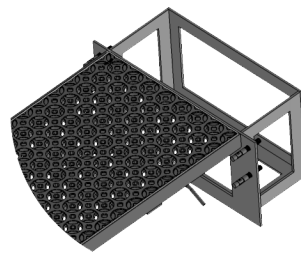
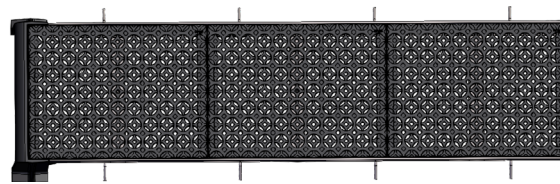
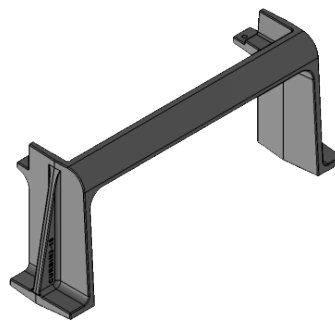
Oblio



Rain



Urban  
Rhythms  
(Solid)



Where the roadway meets the curb, we have designed a cast iron curb inlet that doubles as one terminal end of our trench. This provides a nicely finished end that is also designed to take heavy loads in case someone hops the curb and parks on it.

The curb inlet interfaces with our standard trench frame, which then cuts across the sidewalk to the opening for the bioswale.

Where the trench enters the bioswale, it can be left open, or you can install our new basket/receptacle end (pictured at left), which is designed to filter out larger trash items.

This removable basket is a helpful option for the crews that maintain these stormwater retention areas, especially in urban settings.

To find out more, visit our website  
[IRONAGEGRATES.COM](http://IRONAGEGRATES.COM)  
or call us at 877-418-3568 to talk to  
your Iron Age sales representative.

 **IRON AGE**  
DESIGNS

© Copyright 2020 Iron Age Designs