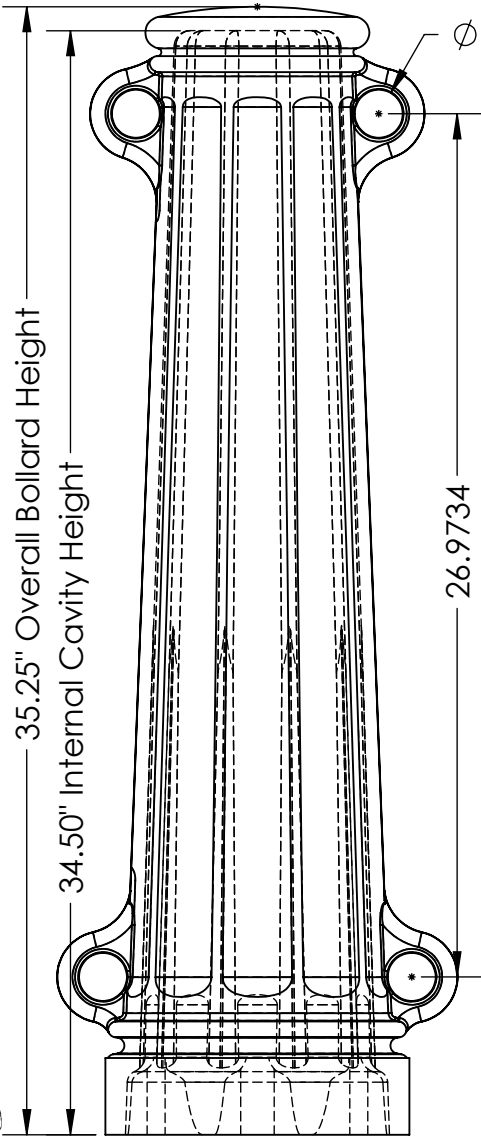


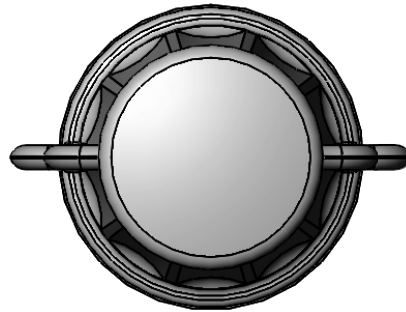
Front

scale 1:6



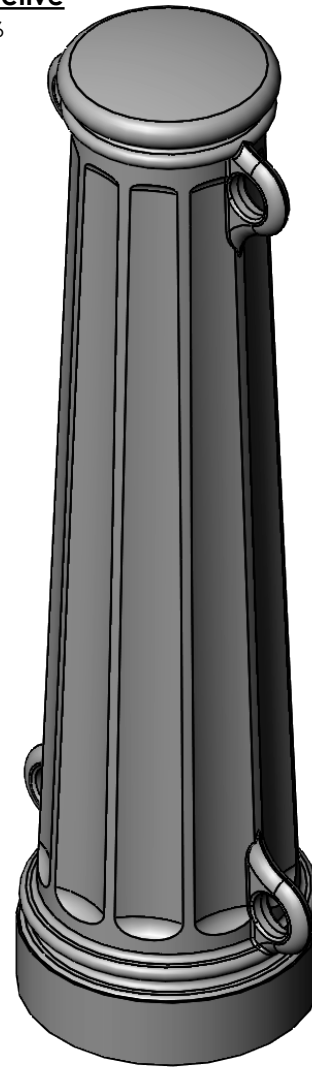
Top

scale 1:6



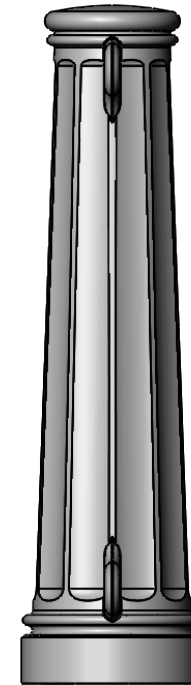
Perspective

scale 1:6



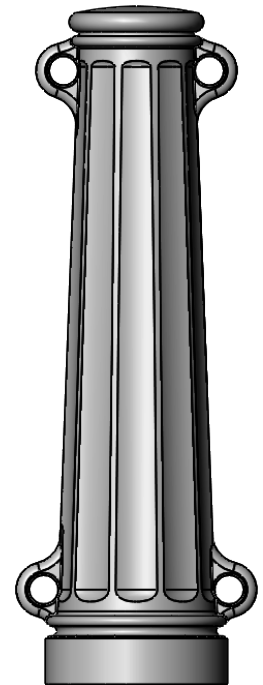
Front

scale 1:10



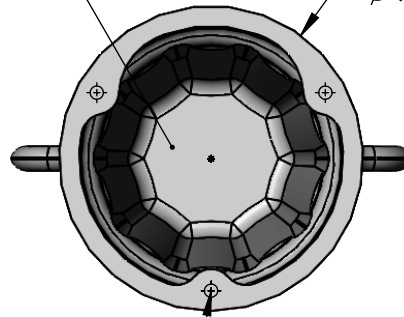
Side

scale 1:10



Cavity to accept galv. threaded rod fabricated removable post by Iron Age

Ø 9.50




Bottom

scale 1:6

3x Drill Points to match mounting

NOTES:

1. Material: cast aluminum ASTM B26 356.2/T6
2. Finish: Powdercoat TBD
3. Typical Cast Thickness 1/2"~3/4"
4. Fits mounting by: Iron Age
5. Weight approx. 38 lbs
6. Due to casting inconsistencies all dimensions are nominal



IRON AGE 2104 SW 152nd st #4 TEL 206.276.0925
 DESIGNS Burien, WA 98166 FAX 206.257.0318
 www.ironagedesigns.com

Main Street Bollard

DWG. NO. 07-BOTH.B.36in

Drawn by: JH
Date: 10/9/17
Scale: Not to Scale