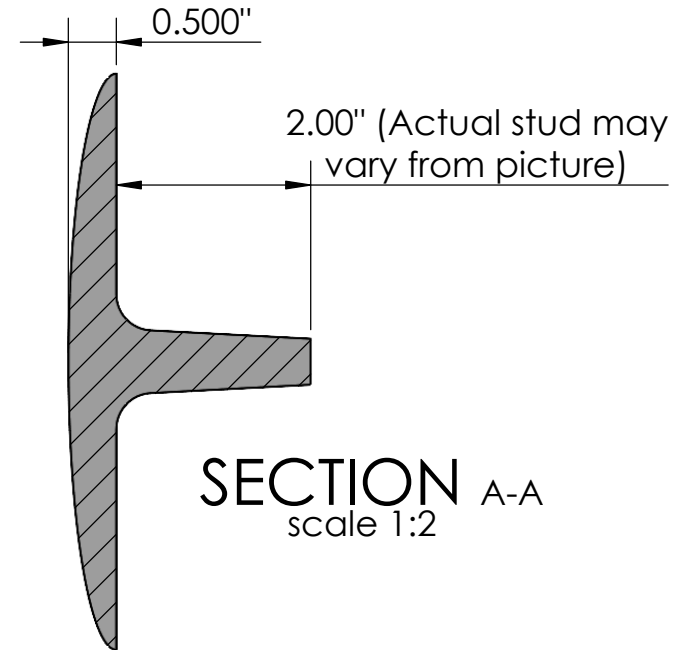
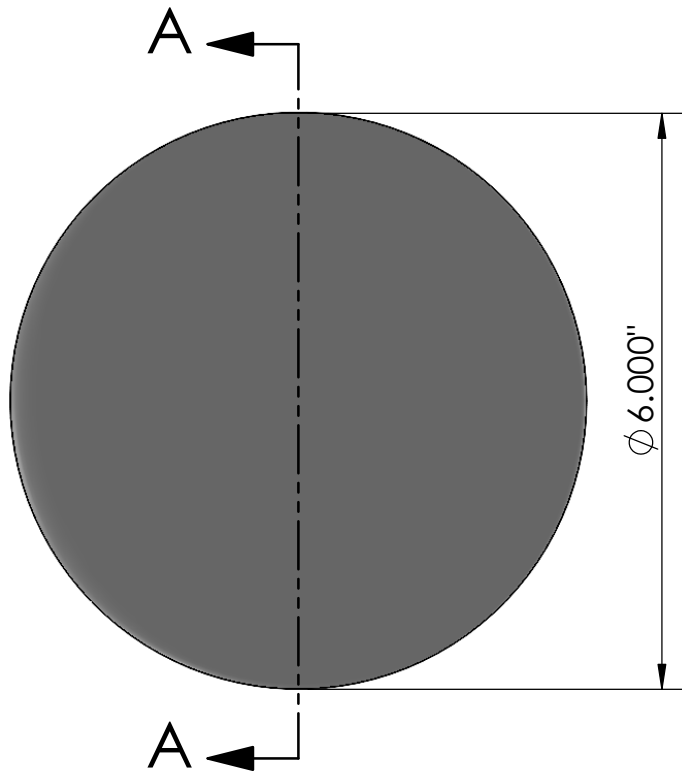
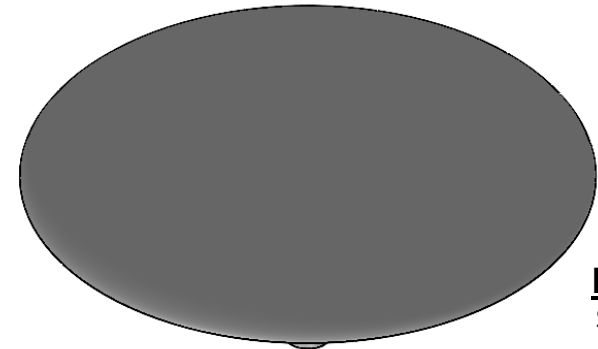
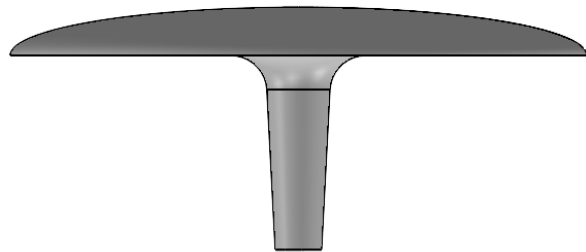


**TOP VIEW**  
scale 1:2



**SECTION A-A**  
scale 1:2

**SIDE VIEW**  
scale 1:2



**ISO-VIEW**  
scale 1:2

**NOTES:**

1. ADA Compliant: No thru openings greater than 1/2".
2. Ships in pieces: 1
3. Due to casting inconsistencies, all dimensions are nominal.

Made in USA ©2016 Iron Age Designs

**Raised Parking Marker - Domed 6" Dia.**



**IRON AGE**  
—DESIGNS—  
Telephone: 206.276.0925  
www.ironagegrates.com

<b>Material:</b> Cast Iron A 48	<b>Weight:</b> 0.25 lbs.	<b>Free Drain Area:</b> N/A in/sq., or N/A %	<b>By:</b> RJ	<b>Checked:</b> MS	<b>Date:</b> 1-9-26
<b>Finish:</b> Baked On Oil	<b>Edge:</b> 0.50"	<b>Flow Rate:</b> N/A GPM, or N/A CuFt./sec.	<b>@ Registration:</b> Pending	<b>Scale:</b> NTS	
<b>Fits:</b> Iron Age Custom Frames SOLD SEPARATELY	<b>Product ID:</b> DB6I	<b>Drawing Name:</b> 01_RPM_ParkingNail_Dome_6dia_Iron			