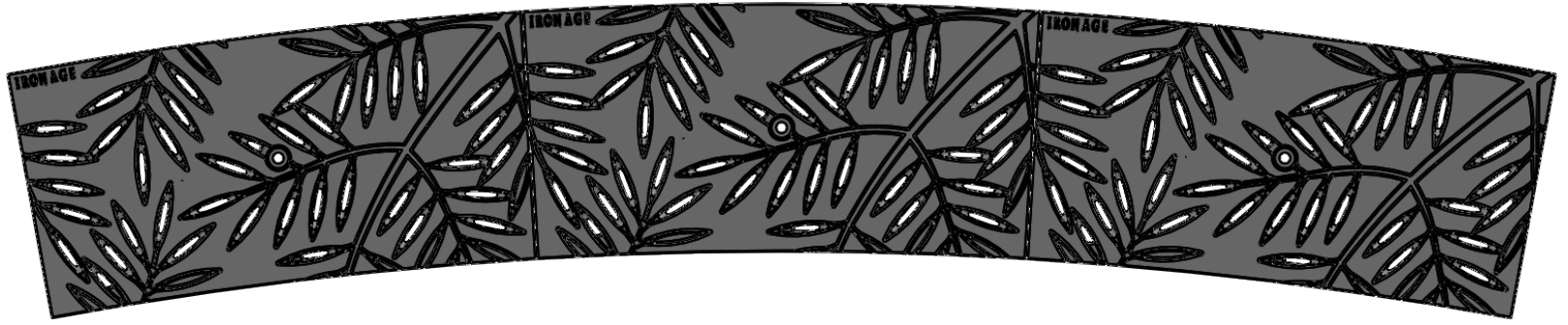
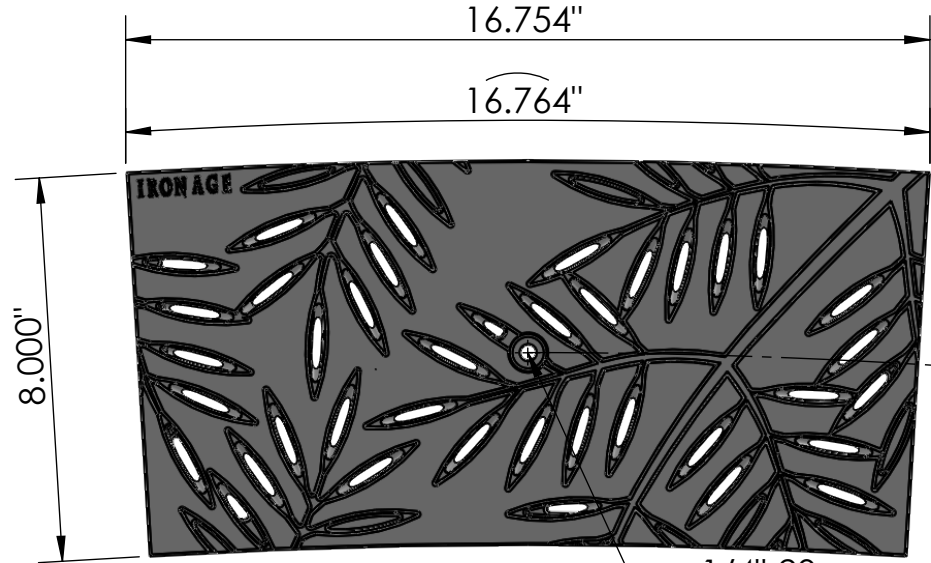


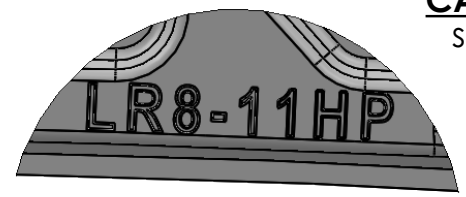
**3 ARRAY**  
scale 1:7



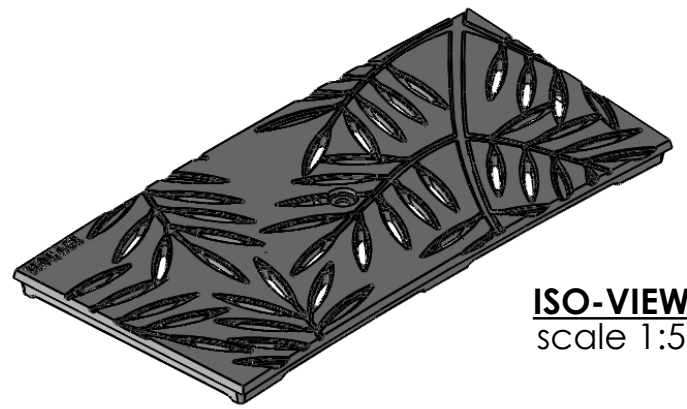
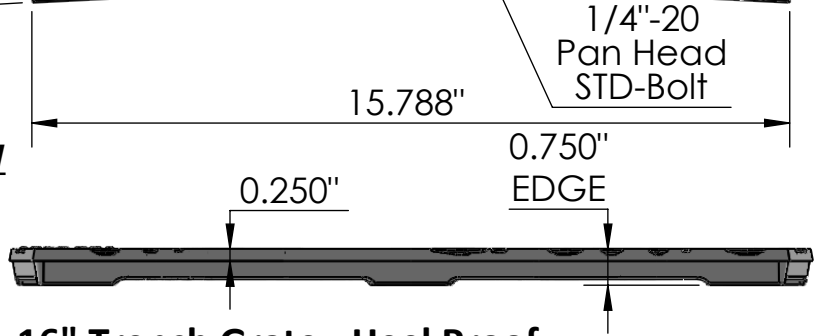
**TOP VIEW**  
scale 1:4



**CASTING-ID**  
scale 1:1



**SIDE VIEW**  
scale 1:4




**ISO-VIEW**  
scale 1:5

**NOTES:**

1. Heelproof: No thru openings greater than 1/4".
2. Ships in pieces: 1
3. Due to casting inconsistencies, all dimensions are nominal.

Made in USA ©2018 Iron Age Designs

**Locust 8" x 16" Trench Grate - Heel Proof**  
**11' - 3" C.L.R.**

 <b>IRON AGE DESIGNS</b> Telephone 206.276.0925 www.ironagegrates.com	<b>Material:</b> Ductile Iron 65-45-12	<b>Weight:</b> 10.00 lbs.	<b>Free Drain Area:</b> 7.38 in/sq., or 5.66 %	<b>By:</b> MS <b>Checked:</b> MS <b>Date:</b> 4-21-22
	<b>Finish:</b> Raw	<b>Edge:</b> 0.750"	<b>Flow Rate:</b> 9.66 GPM, or .021 CuFt./sec.	<b>© Registration:</b> Pending <b>Scale:</b> NTS
	<b>Fits:</b> Iron Age Custom Frames SOLD SEPARATELY	<b>Product ID:</b> LR8-16I9911HP	<b>Drawing Name:</b> 01_LOC_I_8x11'3"CLR_HP_TrenchGrate	