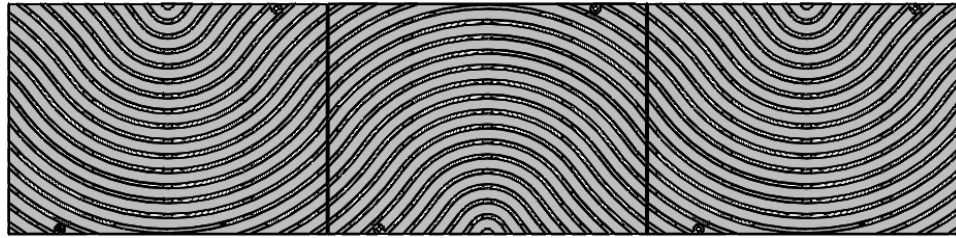
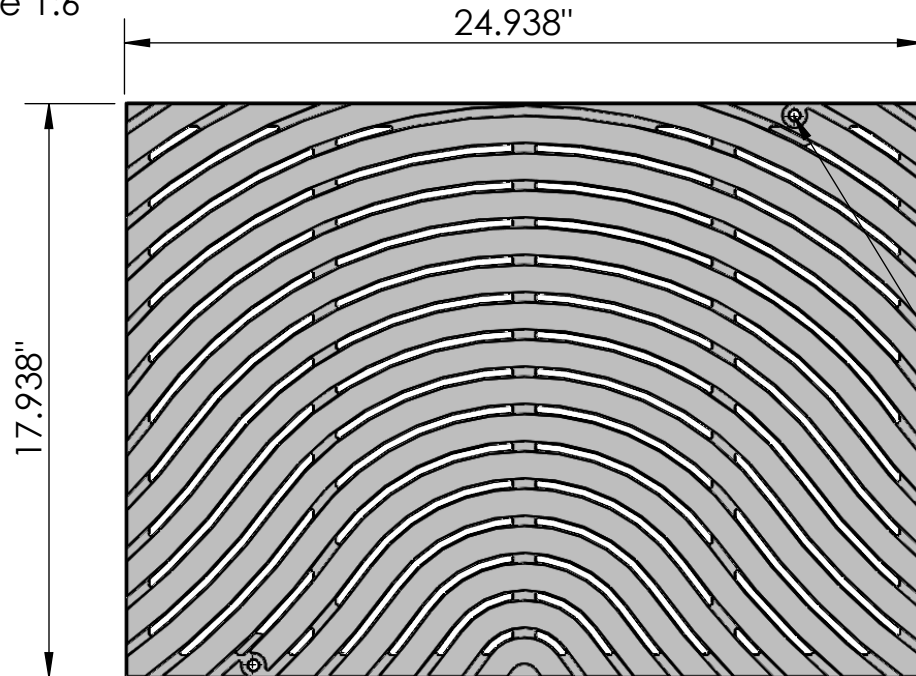


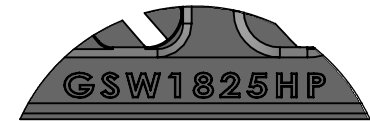
3 ARRAY
scale 1:15



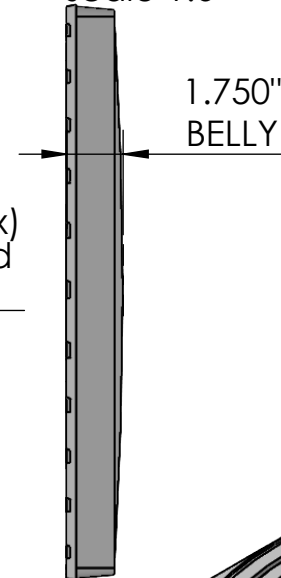
TOP VIEW
scale 1:6



CASTING-ID
scale 1:2

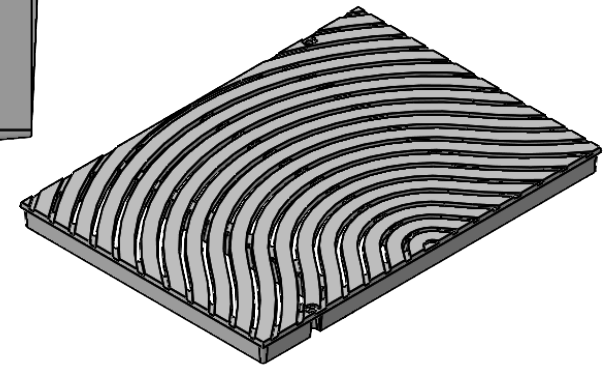


END VIEW
scale 1:6

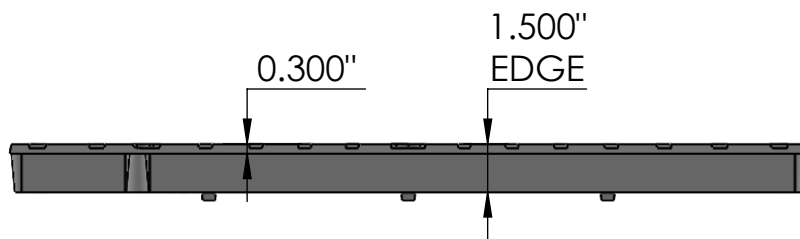


1/4"-20 (2x)
Pan Head
STD Bolt

ISO-VIEW
scale 1:14



SIDE VIEW
scale 1:6




NOTES:

1. Heelproof: No thru openings greater than 1/4".
2. Ships in pieces: 1
3. Due to casting inconsistencies, all dimensions are nominal.

Made in USA ©2016 Iron Age Designs

Ground Swell 18" x 25" Trench Grate - Heel Proof - Heavy Duty

 IRON AGE DESIGNS Telephone 206.276.0925 www.ironagegrates.com	Material: Ductile Iron 65-45-12	Weight: 55.89lbs.	Free Drain Area: 66.87 in/sq., or 14.94 %	By: MS Checked: MS Date: 3-27-24
	Finish: Raw	Edge: 1.500"	Flow Rate: 87.60 GPM, or .195 CuFt./sec.	© Registration: Pending Scale: NTS
	Fits: Iron Age Custom Frames SOLD SEPARATELY	Product ID: GSX18-25I99HPHD	Drawing Name: 03_SWL_I_18x25HPHD_TrenchGrate	