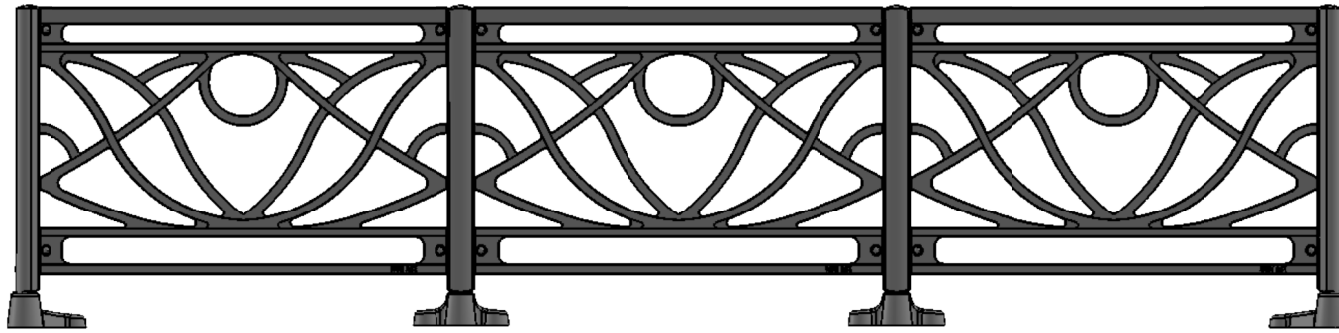


Array 3x

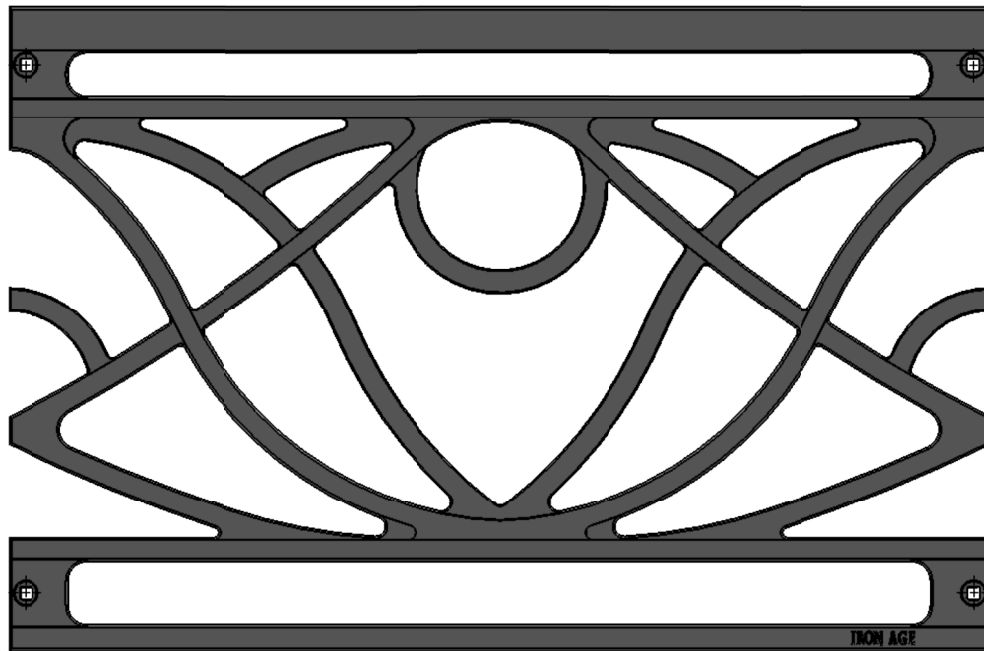


Front

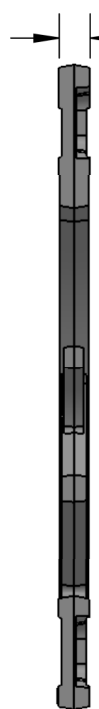
25.5833"

.80"

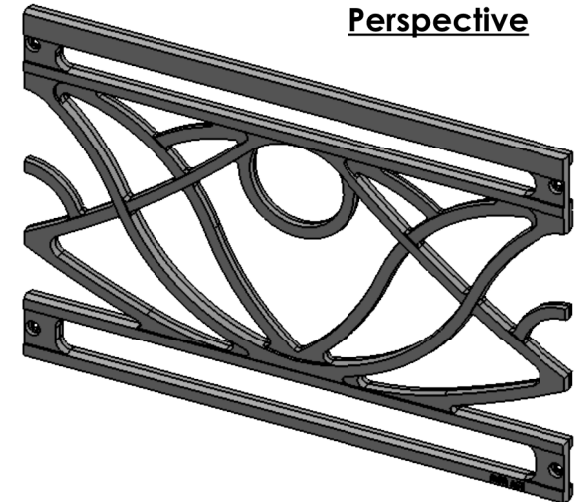
16.75"



Side



Perspective



IRON AGE 2104 SW 152nd St #4 TEL 206.276.0925
DESIGNS Burién, WA 98166 FAX 206.257.0318
www.ironagedesigns.com

Belle Planter Fence

JOB NO.

Drawn by: JH

DWG. NO.

01-Bot.P.Fence_Ext

Date: 4/1/16

Scale: Not to Scale

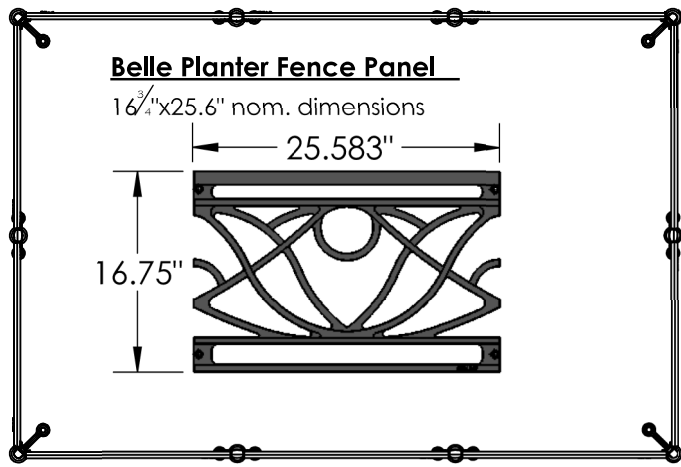
NOTES:

1. Material: cast ductile iron
2. Finish: Powder Coat TBD
3. Due to casting inconsistencies all dimensions are nominal

© 2016 Iron Age Designs

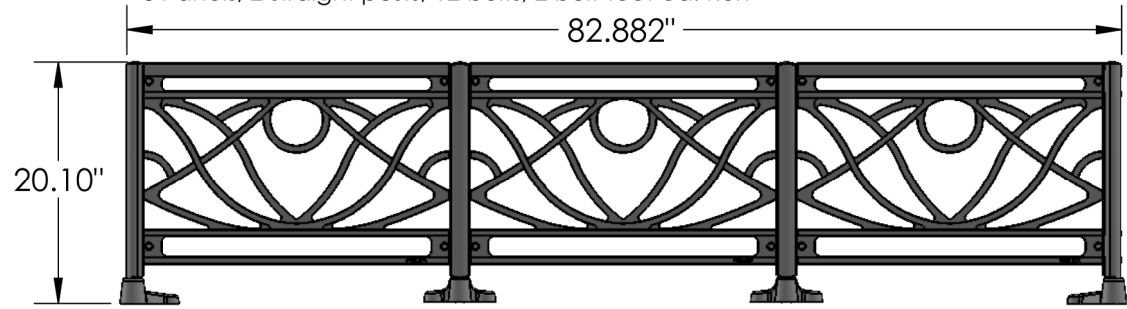
Plan View

Qty 32x Assemblies



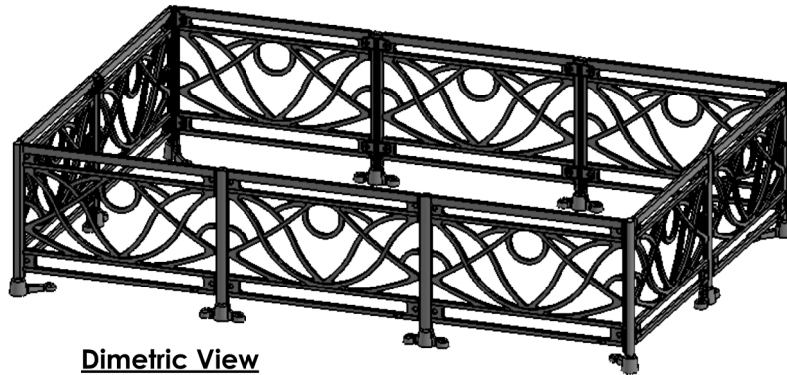
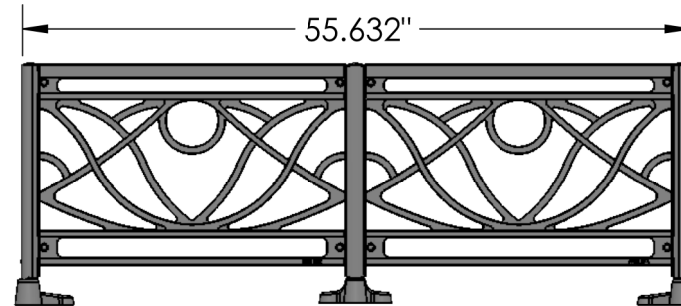
Long Sides

3 Panels, 2 straight posts, 12 bolts, 2 bolt-feet ea. Run

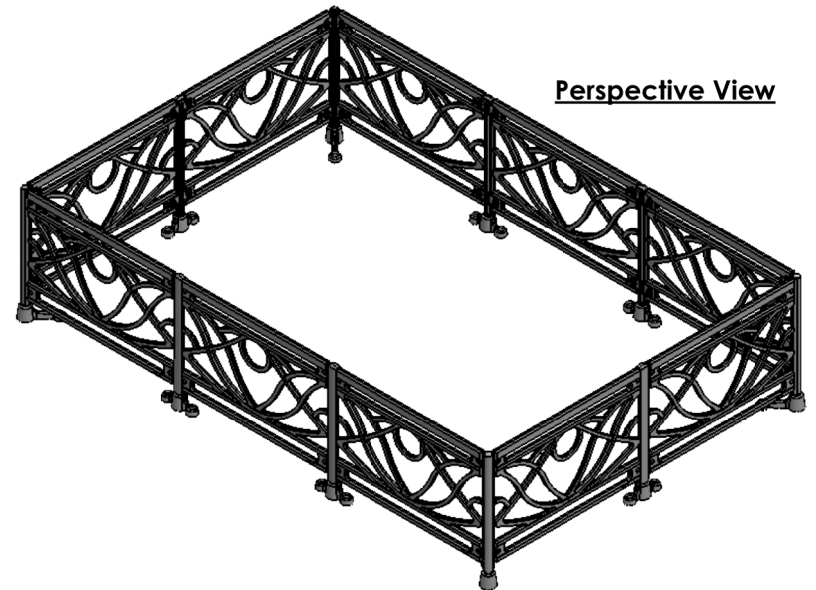


Short Sides

2 Panels, 1 straight post, 8 bolts, 1 bolt-foot ea. Run



Perspective View



IRON AGE 2104 SW 152nd St #4 TEL 206.276.0925
 DESIGNS Burién, WA 98166 FAX 206.257.0318
 www.ironagedesigns.com

Belle Planter Fence

JOB NO.

Drawn by: JH

Date: 4/1/16

DWG. NO. 01-Bot.P.Fence 55"x83"_Multiway

Scale: Not to Scale

NOTES:

1. Material: cast ductile iron
2. Finish: Powdercoat TBD
3. Due to casting inconsistencies all dimensions are nominal