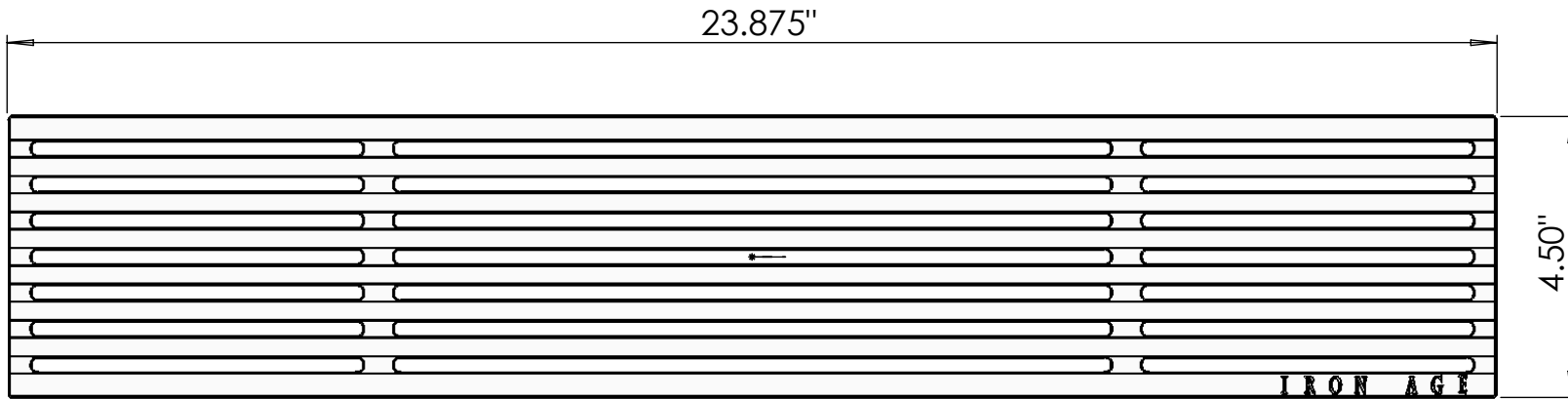
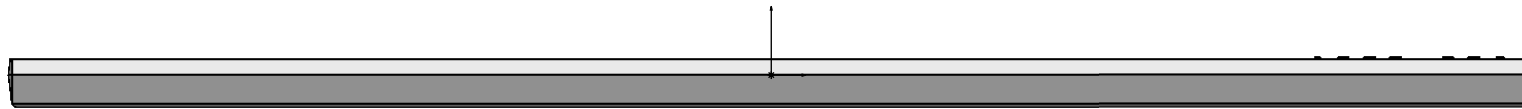
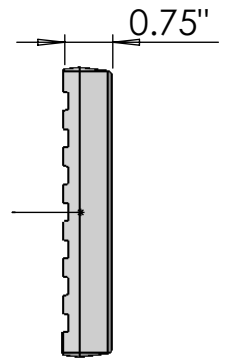


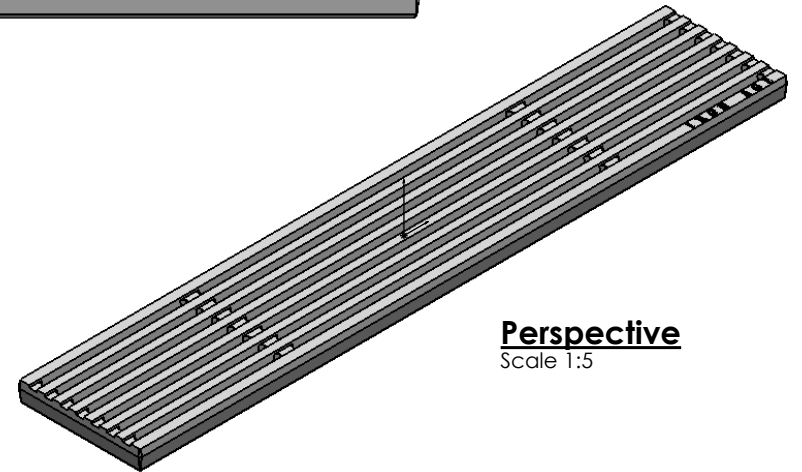
Top
Scale 1:3



Edge
Scale 1:3




Side
Scale 1:3



Perspective
Scale 1:5

NOTES:

1. Material: cast iron
2. Natural finish
3. Edge thickness: 3/4"
4. Heel- Proof; No openings greater than 1/4"
5. Weight approx. N/A
6. Due to casting inconsistencies all dimensions are nominal

 **IRON AGE** 2104 SW 152nd st #4 TEL 206.276.0925
DESIGNS Burién, WA 98166 FAX 206.257.0318
www.ironagedesigns.com

Que 4.5"x24" Heel- Proof Trench Grate

JOB NO. Drawn by: JH
Date: 6/26/14
DWG. NO. 01-Que.l.4.5x24_HP_Brz Scale: NTS