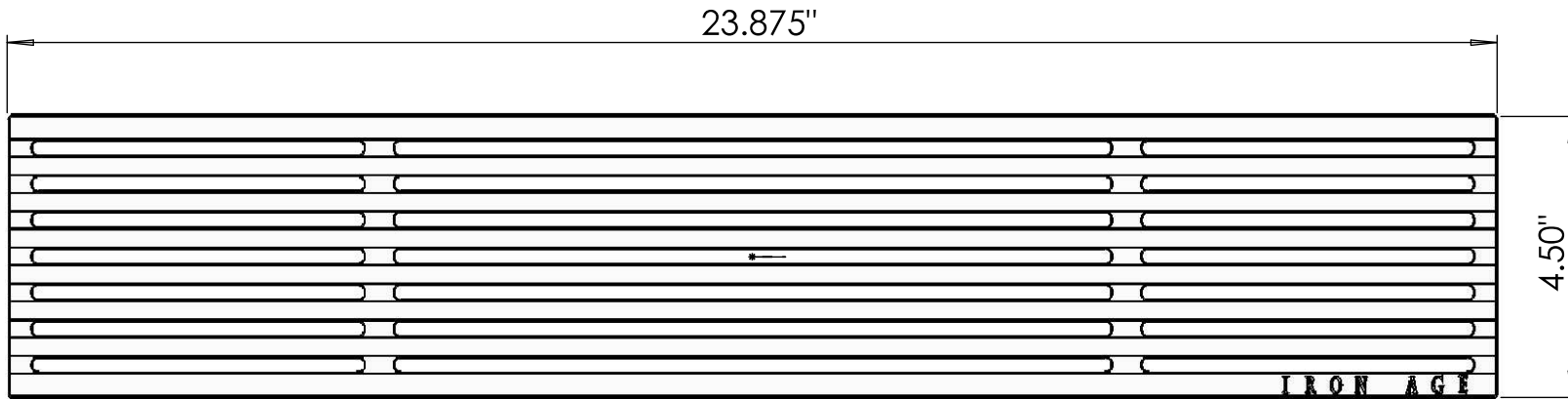
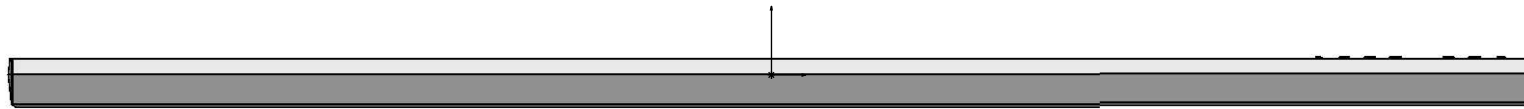
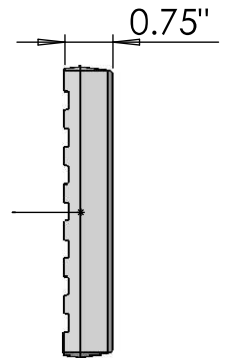


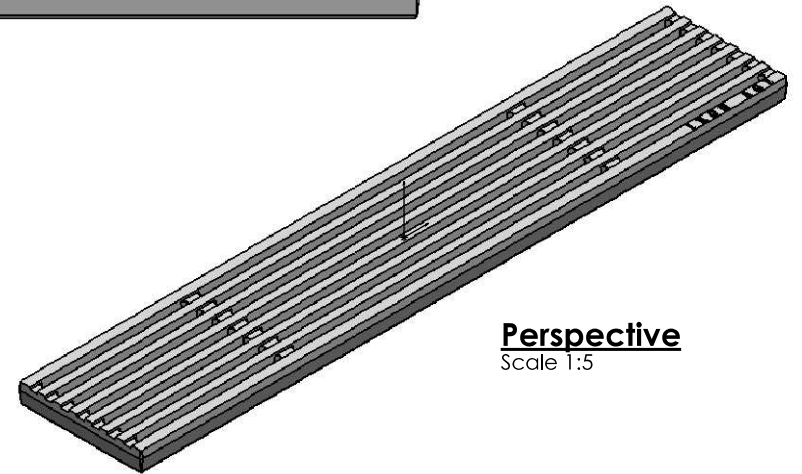
**Top**  
Scale 1:3



**Edge**  
Scale 1:3




**Side**  
Scale 1:3



**Perspective**  
Scale 1:5

**NOTES:**

1. Material: cast iron
2. Natural finish
3. Edge thickness: 3/4"
4. Heel-Proof; No openings greater than 1/4"
5. Weight approx. N/A
6. Due to casting inconsistencies all dimensions are nominal

 **IRON AGE** 2104 SW 152nd St #4 TEL 206.276.0925  
DESIGNS Burién, WA 98166 FAX 206.257.0318  
www.ironagedesigns.com

Que 4.5"x24" Heel-Proof Trench Grate

JOB NO. Drawn by: JH  
Date: 6/26/14  
DWG. NO. 01-Que.l.4.5x24\_HP\_Brz Scale: NTS