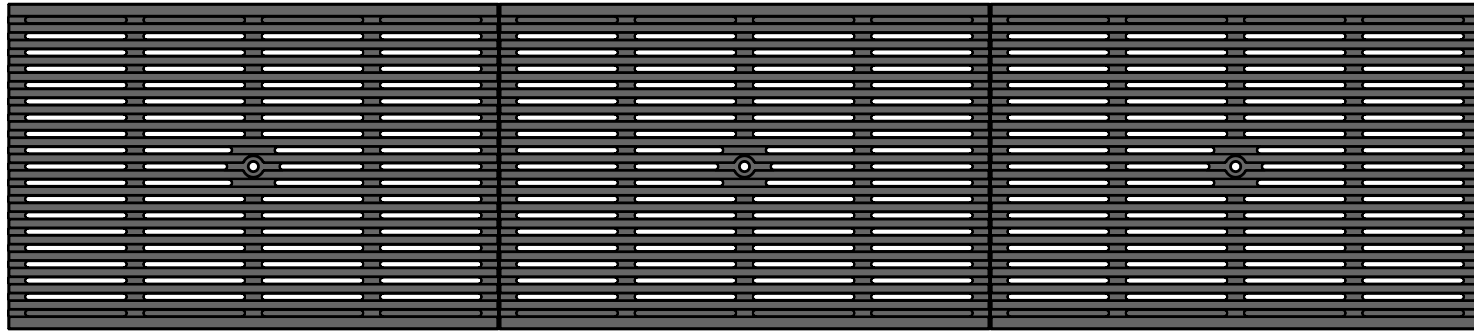
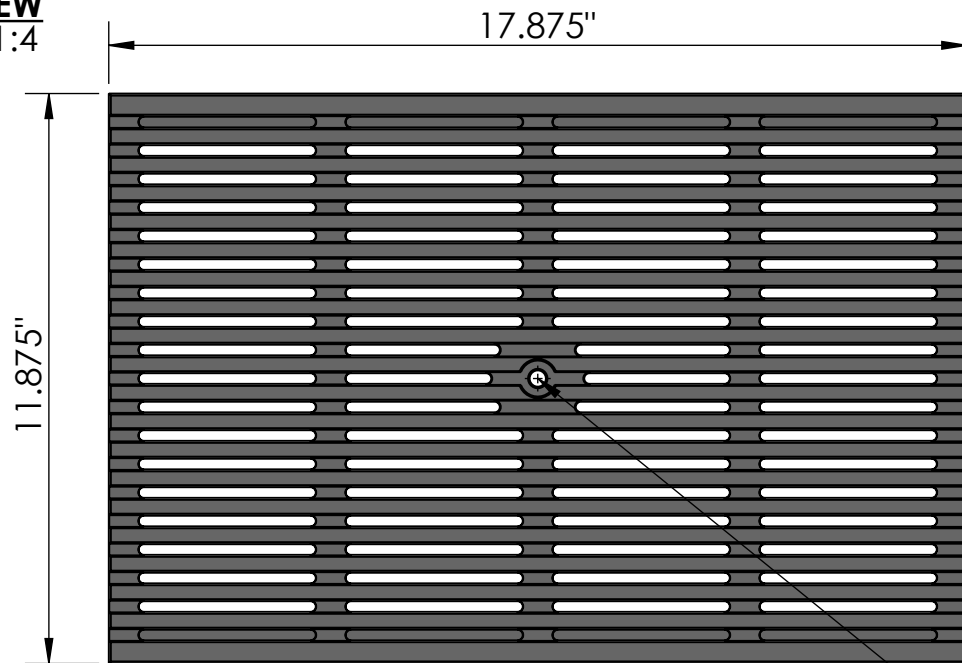


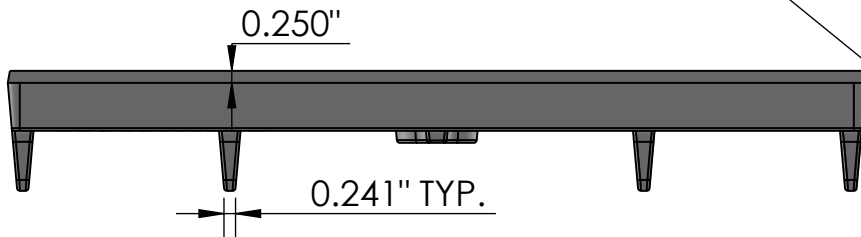
3 ARRAY
scale 1:7



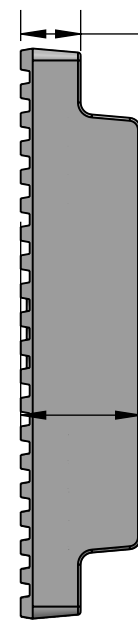
TOP VIEW
scale 1:4



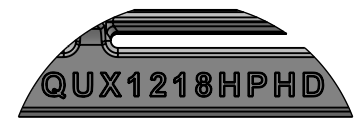
SIDE VIEW
scale 1:4



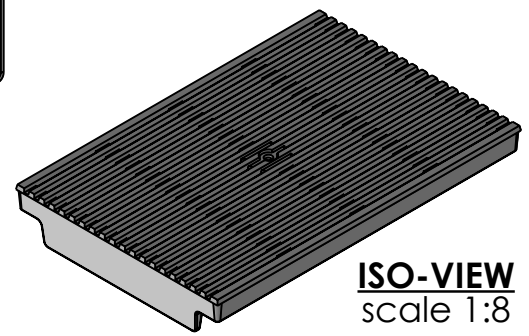
1.250"
EDGE



CASTING-ID
scale 1:3



2.500"
at Belly



ISO-VIEW
scale 1:8


1/4"-20
Pan Head
STD Bolt

NOTES:

1. Heelproof: No thru openings greater than 1/4".
2. Ships in pieces: 1
3. Due to casting inconsistencies, all dimensions are nominal.

Made in USA ©2020 Iron Age Designs

QUE 12" x 18" Trench Grate - Heel Proof, Heavy Duty

 IRON AGE DESIGNS Telephone 206.276.0925 www.ironagegrates.com	Material: Ductile Iron 65-45-12	Weight: 38.31 lbs.	Free Drain Area: 60.15 in./sq., or 28.33 %	By: MS Checked: MS Date: 1-13-23
	Finish: Raw	Edge: 1.250"	Flow Rate: 70.80 GPM, or .157 CuFt./sec.	© Registration: Pending Scale: NTS
	Fits: Iron Age Custom Frames SOLD SEPARATELY	Product ID: QUX12-18I99HPHD	Drawing Name: 03_QUX_I_12x18HPHD_TrenchGrate_TRAVIS	