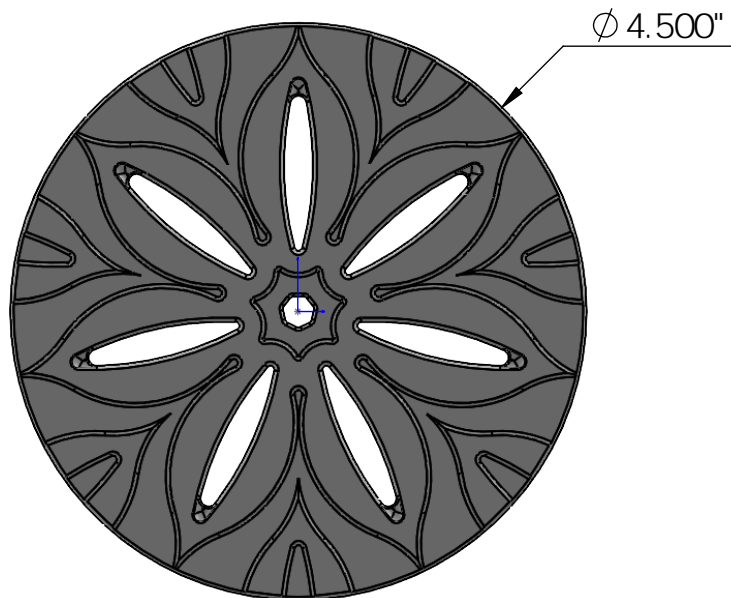
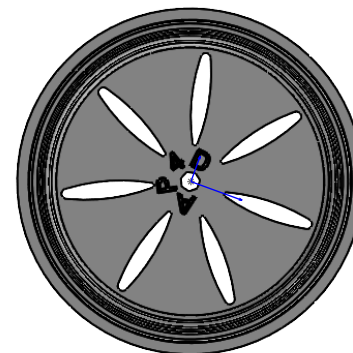


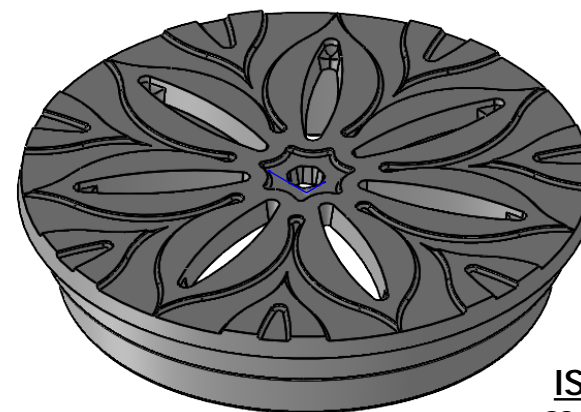
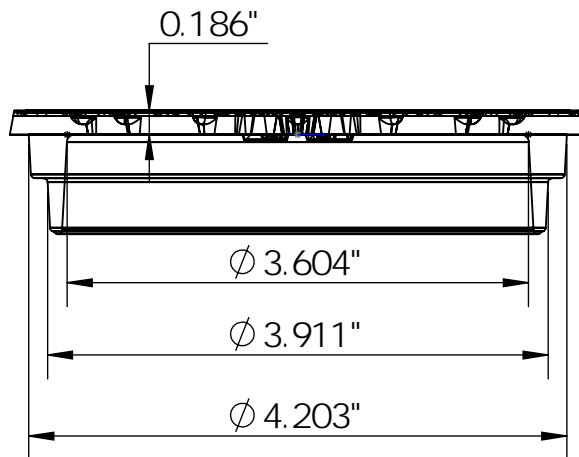
TOP VIEW
scale 1:1.5



CASTING-ID
scale 1:2.5



SIDE VIEW
scale 1:4




ISO-VIEW
scale 1:1.5

NOTES:

1. Heelproof: No thru openings greater than 1/4".
2. Ships in pieces: 1
3. Due to casting inconsistencies, all dimensions are nominal.

Made in USA © 2013 Iron Age Designs

Anise 4" Dia. Pipe Grate - Heel Proof

 IRON AGE DESIGNS Telephone 206.276.0925 www.ironagegrates.com	Material: Ductile Iron 65-45-12	Weight: 1.00 lbs.	Free Drain Area: 1.51 in/sq., or 9.53 %	By: MS	Checked: MS	Date: 7-21-25
	Finish: Baked on Oil	Edge: N/A	Flow Rate: 1.98 GPM, or .0044 CuFt./sec.	© Registration: VA-1-964-889		
	PVC Sch. 40 Pipe: Fits 3" O.D. Bell End, 4" I.D., 4" I.D. Bell End	Product ID: ANX4Dia199PG	Drawing Name: 02_Anise_N_4Dia_PipeGrate_Iron	Scale: NTS		