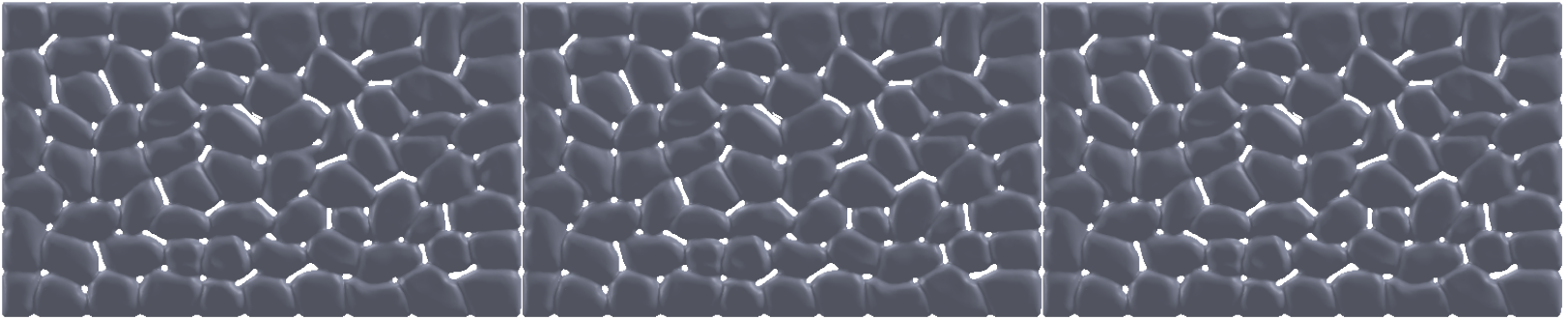


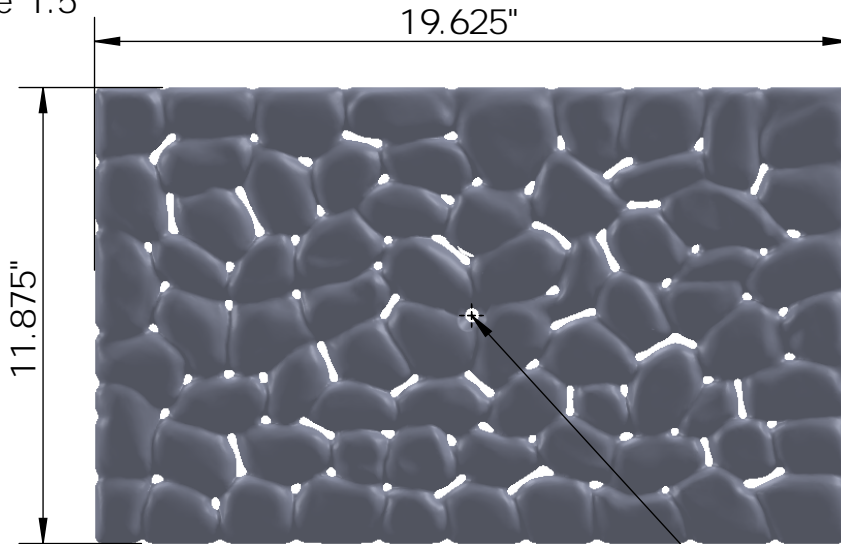
# 3 ARRAY

scale 1:7



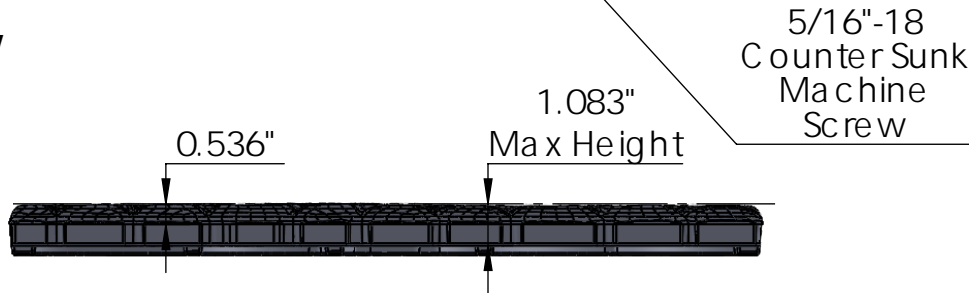
## TOP VIEW

scale 1:5



## SIDE VIEW

scale 1:5



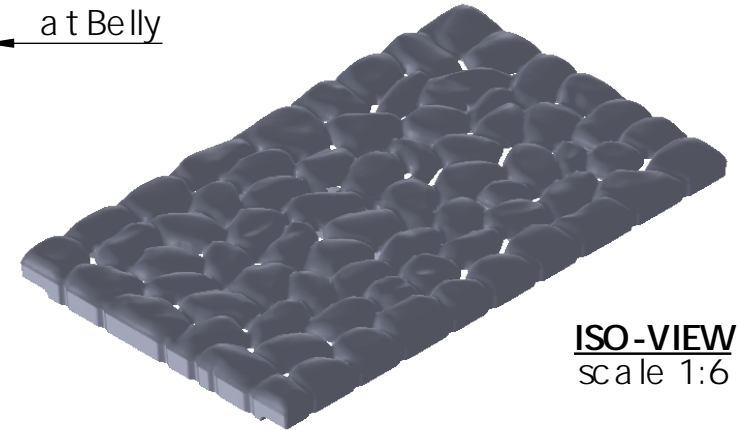
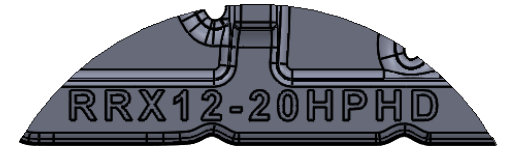
1.000"  
EDGE



## END VIEW

scale 1:5

**CASTING-ID**  
scale 1:2



## ISO-VIEW


scale 1:6

### NOTES:

1. Heelproof: No thru openings greater than 1/4".
2. Ships in pieces: 1
3. Due to casting inconsistencies, all dimensions are nominal.

Made in USA © 2024 Iron Age Designs

## River Rock 12' x 20' Trench Grate - Heel Proof - Heavy Duty

 <b>IRON AGE DESIGNS</b> Telephone 206.276.0925 www.ironagegrates.com	<b>Material:</b> Ductile Iron 65-45-12	<b>Weight:</b> 41.3 lbs.	<b>Free Drain Area:</b> 6.61 in/sq., or 2.83 %	<b>By:</b> MS	<b>Checked:</b> MS	<b>Date:</b> 1-9-25
	<b>Finish:</b> Raw	<b>Edge:</b> 1.000"	<b>Flow Rate:</b> 8.66 GPM, or .019 CuFt./sec.	<b>© Registration:</b> Pending		<b>Scale:</b> NTS
	<b>Fits</b> Iron Age Custom Frames SOLD SEPARATELY	<b>Product ID:</b> RRX12-20199HPHD	<b>Drawing Name:</b> 01_RiverRock_I_12x20HPHD_TrenchGrate_Iron			

Page 1