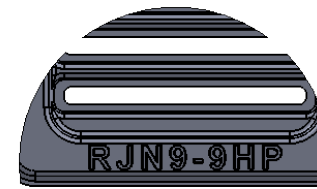
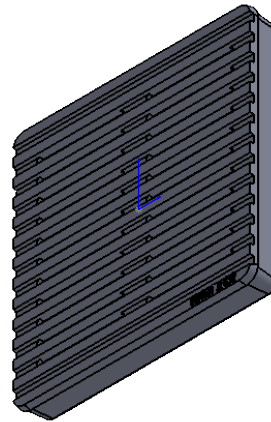
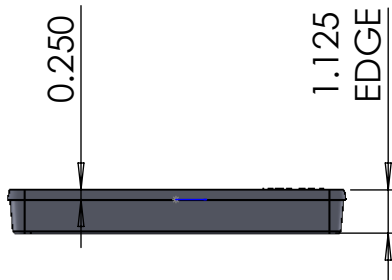
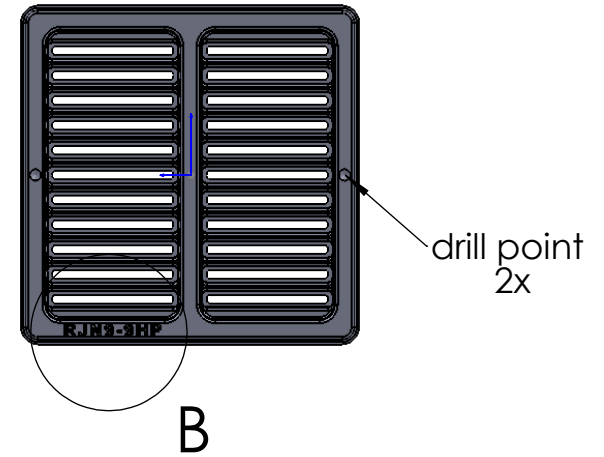


SECTION A-A



DETAIL B

SCALE 2 : 5

Notes:

1. Heel Proof: No openings greater than $\frac{1}{4}$ ".
2. Due to casting inconsistencies, all dimensions are nominal.

©2017 Iron Age Designs

Regular Joe 9"x9" Heel Proof Catch Basin Grate



Material: Cast Ductile Iron

Weight: 10 lbs

Standard Finish: Raw

Edge Thickness: 1.125"

Fits: NDS 900 Series

Free Area (approx): 15.47"sq (19.09%)

Gallon/ Min (approx): 20.25

Product ID: RJN9-9HP

Scale: none

By: MS

Date: 11-8-17