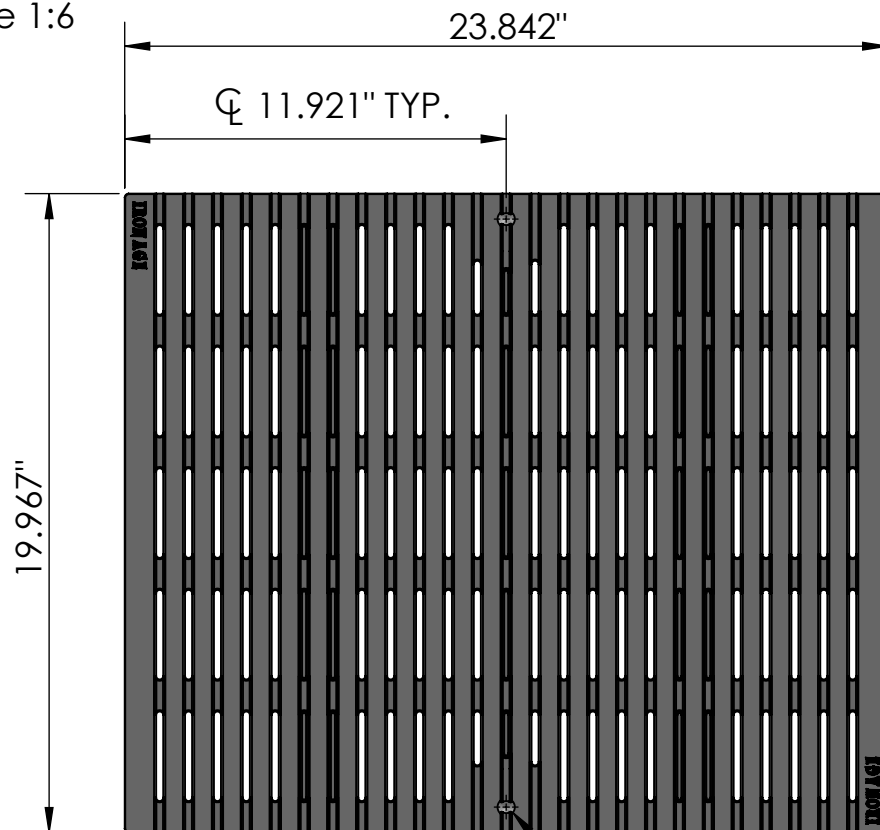
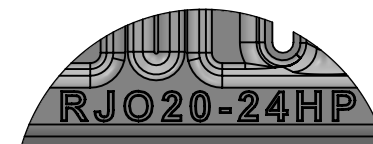
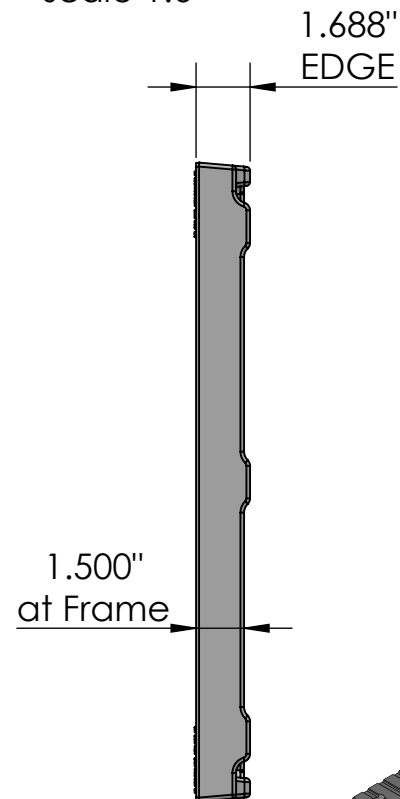


**TOP VIEW**  
scale 1:6

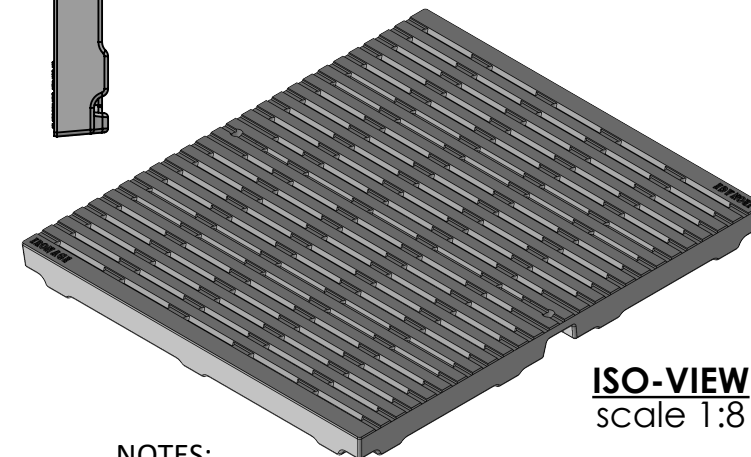
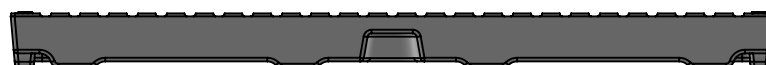


**END VIEW**  
scale 1:6



**CASTING-ID**  
scale 1:2

**SIDE VIEW**  
scale 1:6




**ISO-VIEW**  
scale 1:8

**NOTES:**

1. Heelproof: No thru openings greater than ¼".
2. Ships in pieces: 1
3. Due to casting inconsistencies, all dimensions are nominal.

Made in USA ©2023 Iron Age Designs

**Regular Joe 20" x 24" Catch Basin Grate - Heel Proof**

 <b>IRON AGE DESIGNS</b> Telephone 206.276.0925 www.ironagegrates.com	<b>Material:</b> Ductile Iron 65-45-12	<b>Weight:</b> 110 lbs.	<b>Free Drain Area:</b> 59.57 in/sq., or 12.47 %	<b>By:</b> MS	<b>Checked:</b> MS	<b>Date:</b> 5-7-23
	<b>Finish:</b> Raw	<b>Edge:</b> 1.688"	<b>Flow Rate:</b> 78.04 GPM, or .173 CuFt./sec.	<b>© Registration:</b> Pending	<b>Scale:</b> NTS	
	Olympic Foundry CO <b>Fits:</b> 20x24 Reversible Locking Frame & Grate	<b>Product ID:</b> RJO20-24I63HP	<b>Drawing Name:</b> 01_RJO_OFCO_20x24HP_CatchBasinGrate			