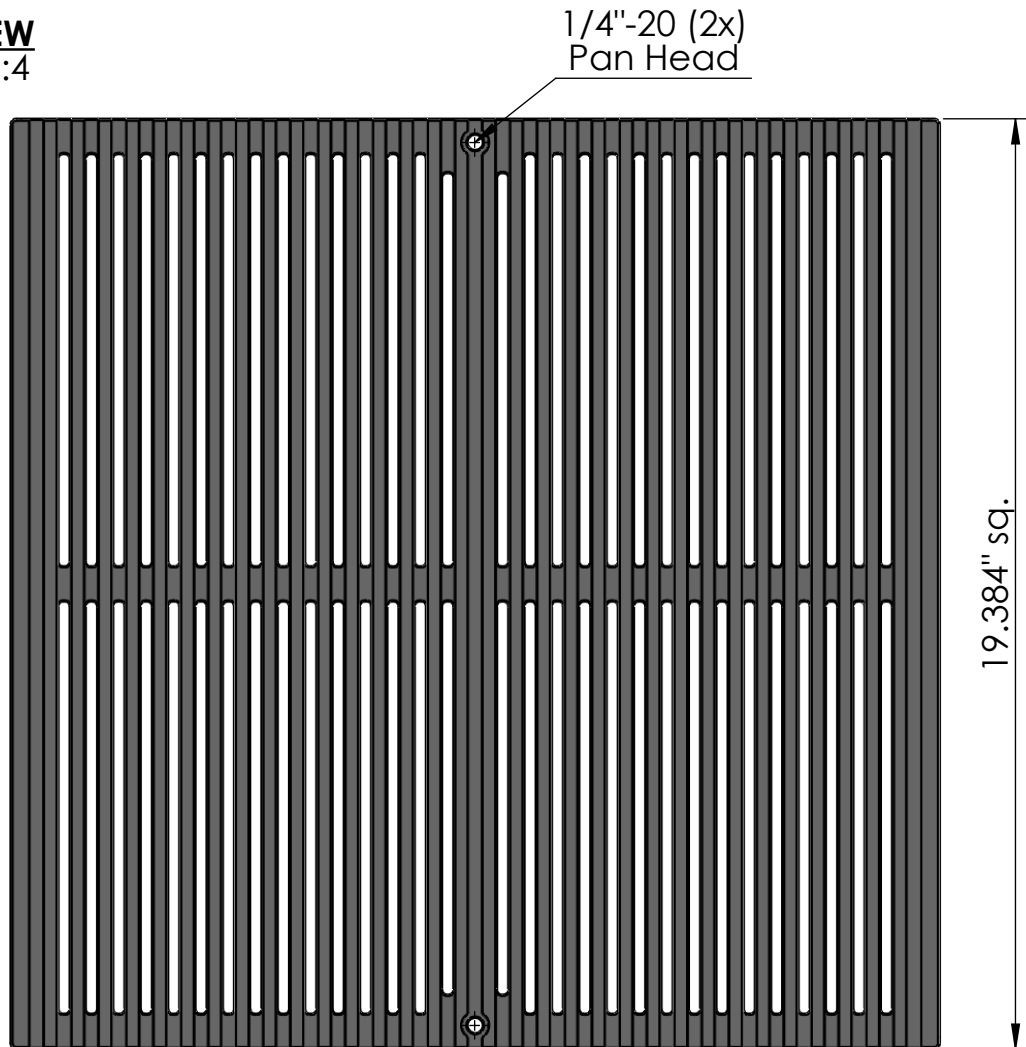


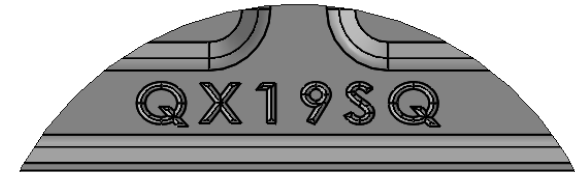
TOP VIEW
scale 1:4



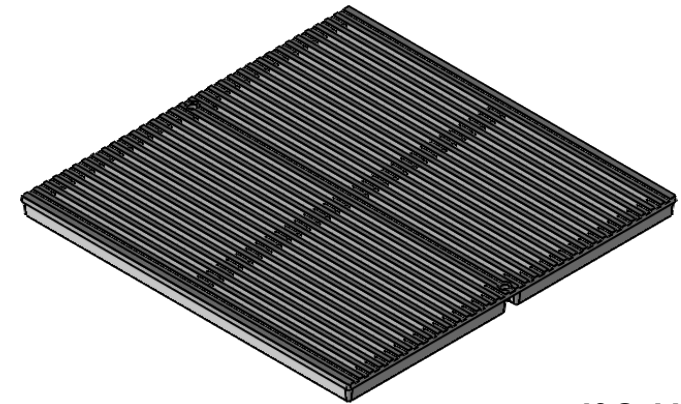
SIDE VIEW
scale 1:4



Regular Joe 20"x 20" Catch Basin Grate - Heel Proof



CASTING-ID
scale 1:2




ISO-VIEW
scale 1:8

NOTES:

1. Heelproof: No thru openings greater than ¼".
2. Ships in pieces: 1
3. Due to casting inconsistencies, all dimensions are nominal.

Made in USA ©2014 Iron Age Designs

 IRON AGE DESIGNS Telephone 206.276.0925 www.ironagegrates.com	Material: Ductile Iron 65-45-12	Weight: 32.05 lbs.	Free Drain Area: 114.24 in/sq., or 30.40 %	By: MS Checked: MS Date: 6-23-25
	Finish: Raw	Edge: 1.000"	Flow Rate: 149.66 GPM, or .333 CuFt./sec.	© Registration: Pending Scale: NTS
	Fits: Iron Age CustomFrames SOLD SEPARATELY	Product ID: RJX20-20I99HP	Drawing Name: 01_RegJoe_I_19.5x19.5HP_CatchBasin	