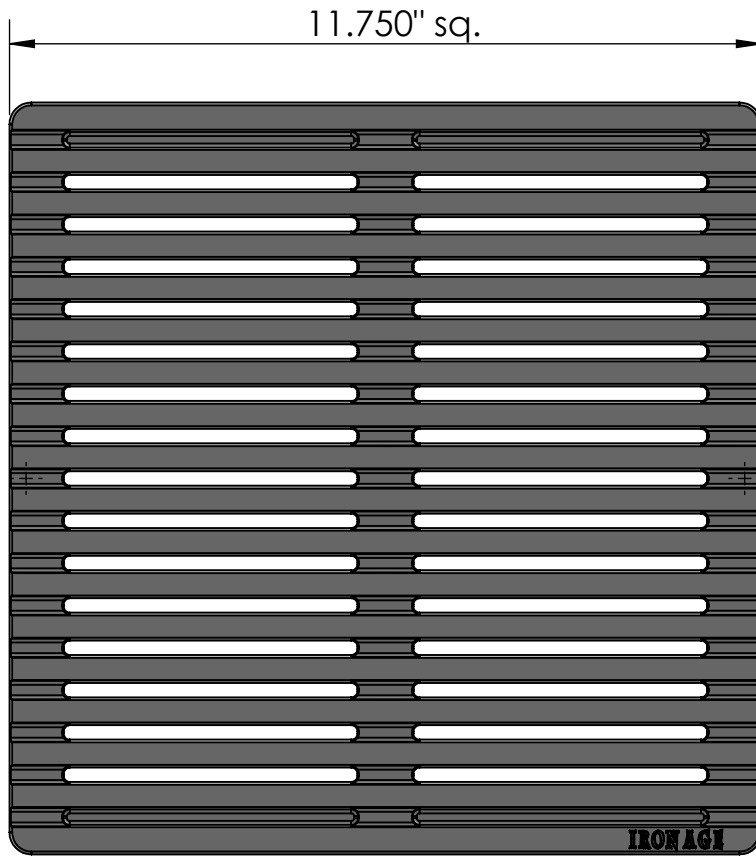
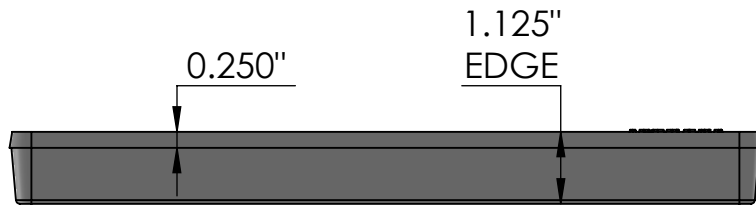


TOP VIEW
scale 1:3

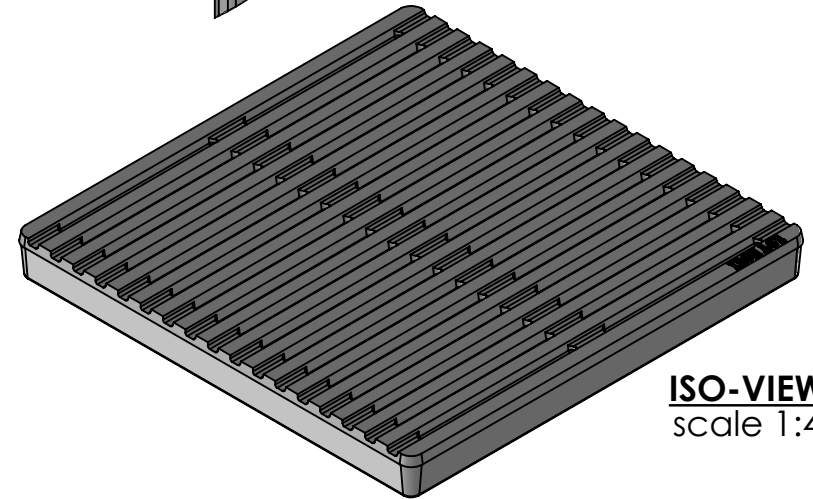
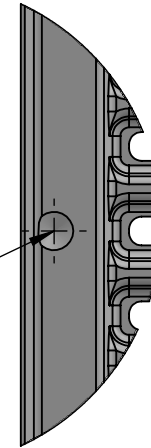


SIDE VIEW
scale 1:3



CASTING-ID
scale 2:3

Drill Point (2x)
in Back




ISO-VIEW
scale 1:4

NOTES:

1. Heelproof: No thru openings greater than 1/4".
2. Ships in pieces: 1
3. Due to casting inconsistencies, all dimensions are nominal.

Made in USA ©2017 Iron Age Designs

Regular Joe 12" x 12" Catch Basin Grate - Heel Proof

 IRON AGE DESIGNS Telephone 206.276.0925 www.ironagegrates.com	Material: Ductile Iron 65-45-12	Weight: 17.90lbs.	Free Drain Area: 30.74 in/sq., or 22.53 %	By: MS Checked: MS Date: 11-29-23
	Finish: Raw	Edge: 1.125"	Flow Rate: 40.27 GPM, or .089 CuFt./sec.	© Registration: Pending Scale: NTS
	Fits: NDS® 1200 Series	Product ID: RJN12-12I12HP	Drawing Name: 02_RJoe_N_12x12HP_CatchBasin_Iron	