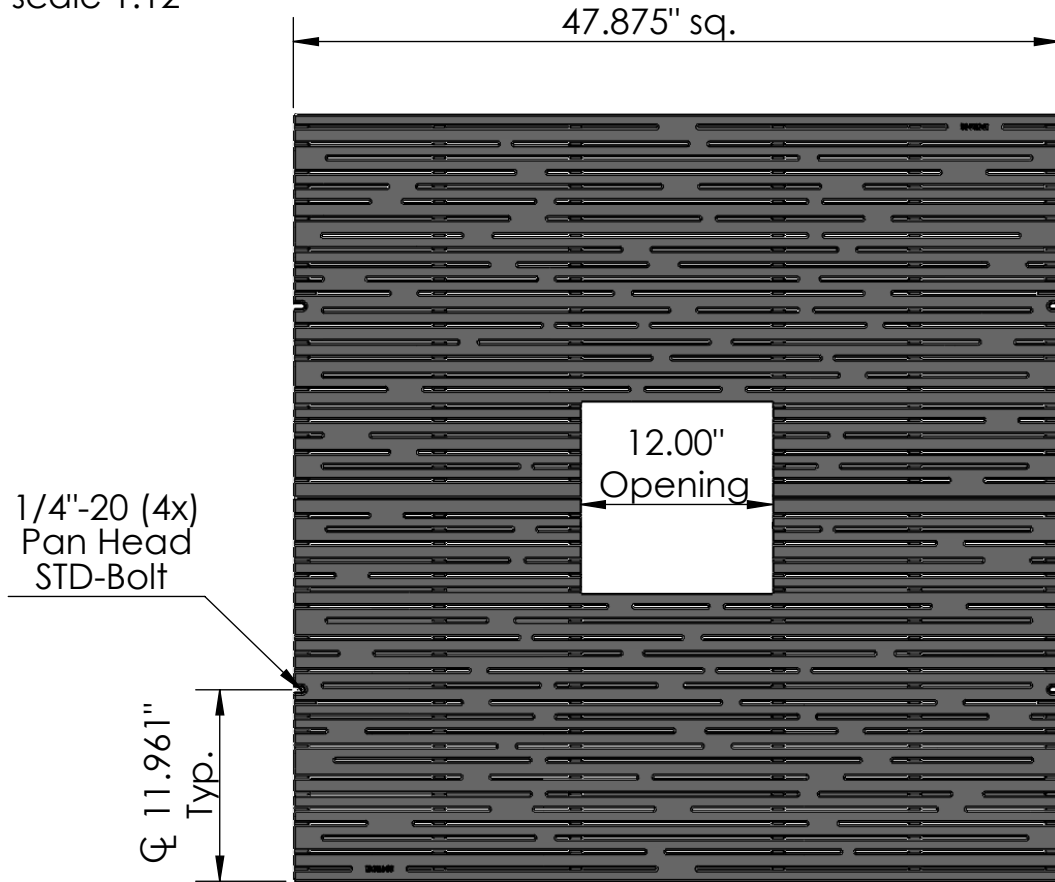


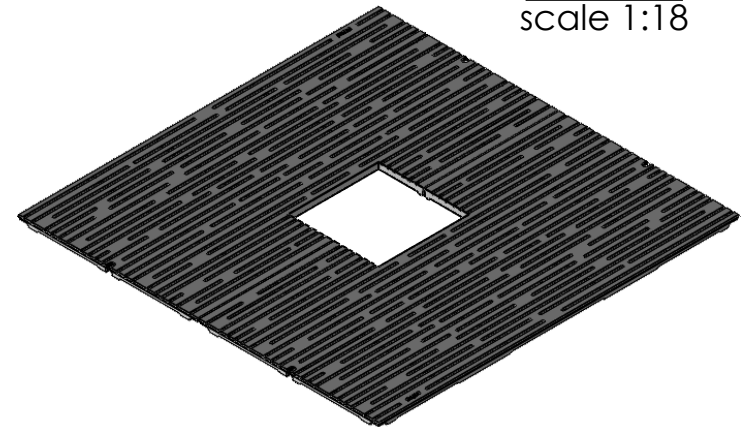
**TOP VIEW**  
scale 1:12



**CASTING-ID**  
scale 1:2



**ISO-VIEW**  
scale 1:18



**SIDE VIEW**  
scale 1:12




**NOTES:**

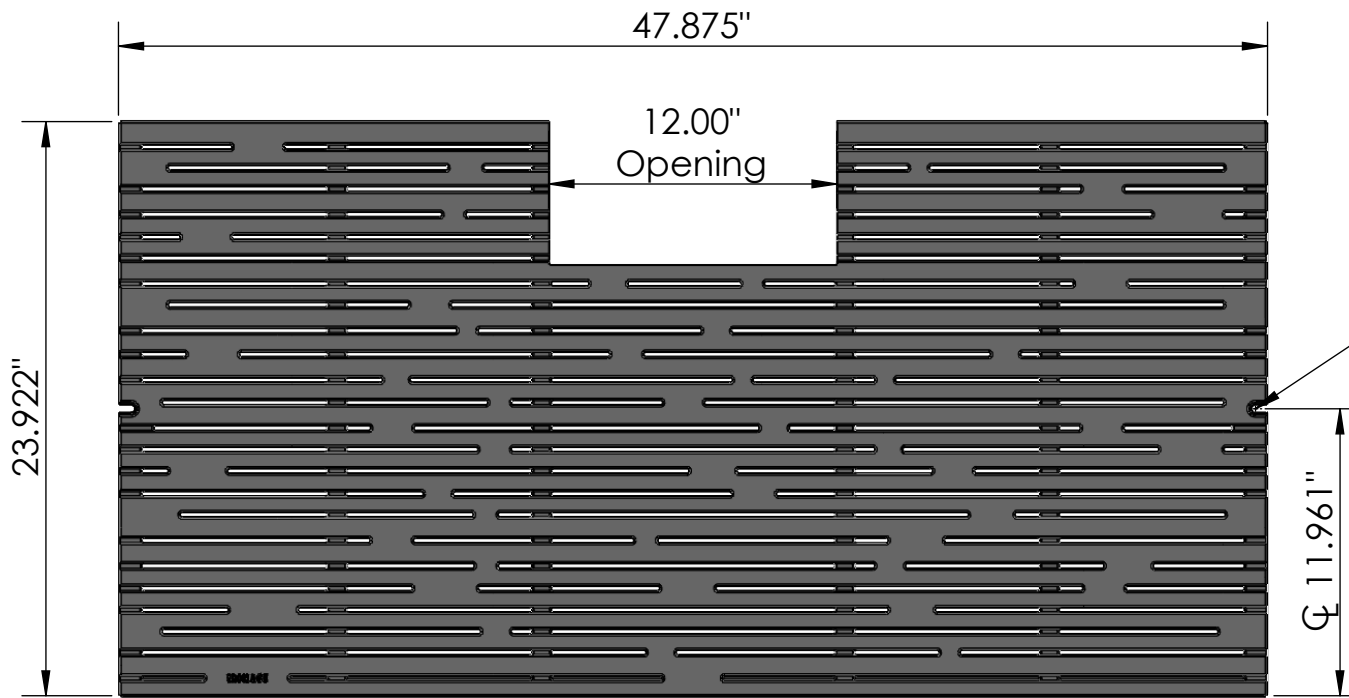
1. Heelproof: No thru openings greater than ¼".
2. Pieces per Set: 2
3. Due to casting inconsistencies, all dimensions are nominal.
4. Center Openings Options:  
Cast at 12" & 24", Breakouts at 16" & 20".
5. Pedestrian Load Only.

**Rain 4' x 4' Tree Grate - Heel Proof**

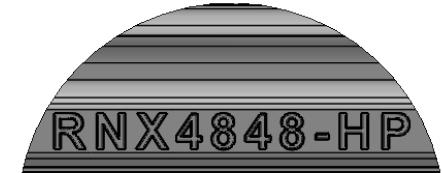
Made in USA ©2014 Iron Age Designs

 <b>IRON AGE</b> DESIGNS Telephone 206.276.0925 www.ironagegrates.com	<b>Material:</b> Ductile Iron 65-45-12 or better	<b>Weight:</b> 190.02 lbs.	<b>Free Drain Area:</b> 307.2 in/sq. or 14.31 %	<b>By:</b> MS <b>Checked:</b> MS <b>Date:</b> 9-20-21
	<b>Finish:</b> Raw	<b>Edge:</b> 1.000"	<b>Flow Rate:</b> 402.42 GPM	<b>© Registration:</b> VA 1-969-982 <b>Scale:</b> NTS
	<b>Fits:</b> Iron Age Custom Frame SOLD SEPARATELY	<b>Product ID:</b> RNX48-48I99TGHP	<b>Drawing Name:</b> 02_RAI_I_48x48HP_TreeGrate_12open_Comp	

**TOP VIEW**  
scale 1:8



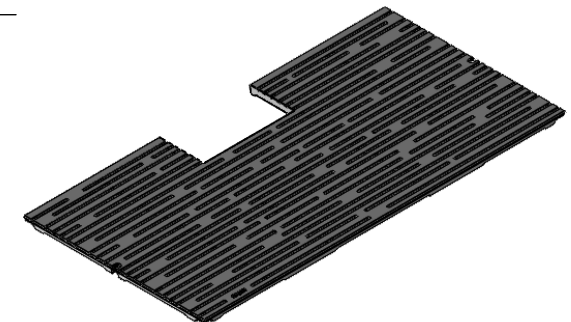
**CASTING-ID**  
scale 1:2



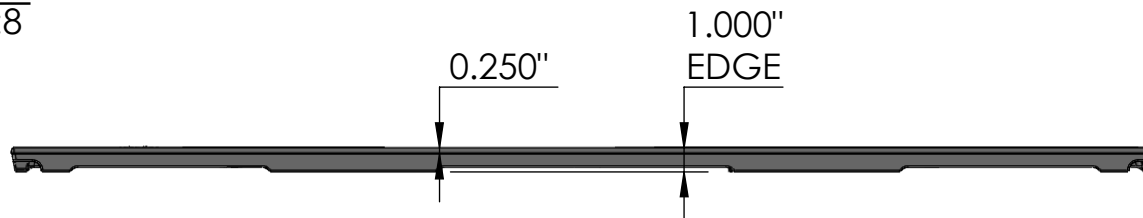
1/4"-20 (2x)  
Pan Head  
STD-Bolt

Ø 11.961"

**ISO-VIEW**  
scale 1:18



**SIDE VIEW**  
scale 1:8




**NOTES:**

1. Heelprof: No thru openings greater than 1/4".
2. Due to casting inconsistencies, all dimensions are nominal.
3. Pedestrian Load Only.

Made in USA

©2014 Iron Age Designs

**Rain 4' x 4' Tree Grate - Heel Proof - Half Panel**

 <b>IRON AGE DESIGNS</b> Telephone 206.276.0925 www.ironagegrates.com	<b>Material:</b> Ductile Iron 65-45-12 or better	<b>Weight:</b> 95.01 lbs.	<b>Free Drain Area:</b> 153.6 in/sq. or 14.31 %	<b>By:</b> MS	<b>Checked:</b> MS	<b>Date:</b> 9-20-21
	<b>Finish:</b> Raw	<b>Edge:</b> 1.000"	<b>Flow Rate:</b> 201.21 GPM	<b>© Registration:</b> VA 1-969-982		<b>Scale:</b> NTS
	<b>Fits:</b> Iron Age Custom Frame SOLD SEPARATELY	<b>Product ID:</b> RNx48-48I99TGHP	<b>Drawing Name:</b> 02_RAI_I_48x48HP_TreeGrate_12open			