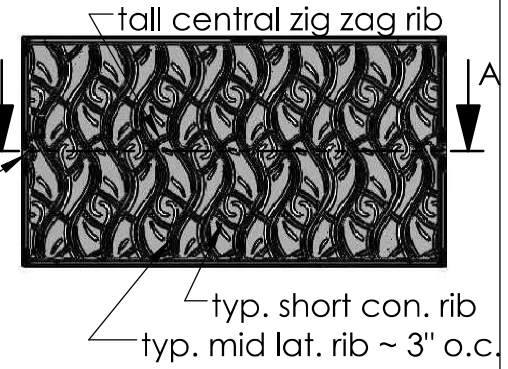


2 GRATES  
ARRAYED  
scale 1:30



BOTTOM  
scale 1:20

(4X) drill point  
to locate bolt dn. hole



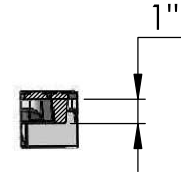
typ. Face thk.  
0.344"

44.125"

23.9375"



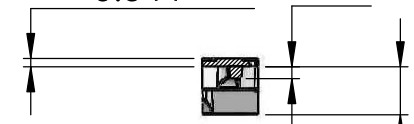
SECTION A-A



X CUT @ MID  
LATERAL RIB  
scale 1:8

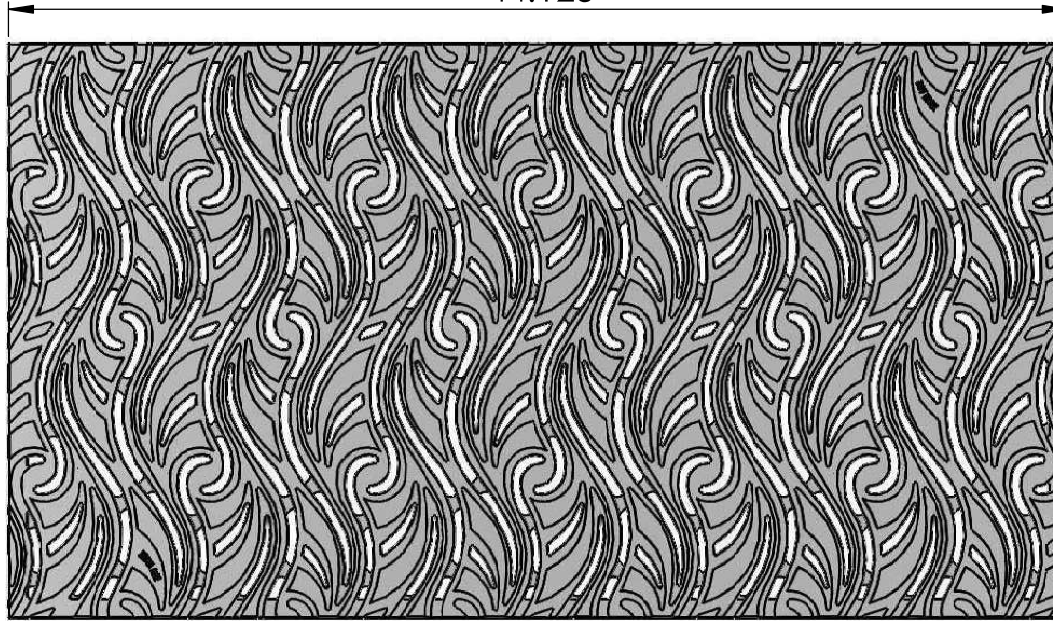
typ. front thk.  
0.344"

0.5"



2" tall central rib

X CUT @ SHORT  
CONNECTING RIB  
scale 1:8



TOP  
scale 1:8

2.344" @ End Rib  
2.75" O.A. Height



EDGE  
scale 1:8

(8X) 3/8" tall feet

2.344" @ Edge Rib

**IRON AGE** DESIGNS  
2104 SW 152nd St #4 Burien, WA 98166  
TEL 206.276.0925 FAX 206.257.0318  
www.ironagedesigns.com

NOTES:

1. Material: cast ductile iron
2. Finish: natural
3. Heavy Duty 5000-7500 lb Live Load
4. Approx. Weight: 170 lbs
5. Fits Frame by Iron Age™

Minnione 24"x44" Heavy-Duty  
Catch Basin Grate

Drawn by: CD  
Date: 9/30/15  
Scale: NTS

DWG. NO. MIN.1.24x44

© 2015 Iron Age Designs