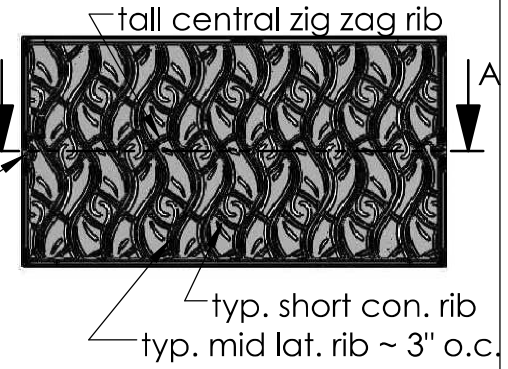


2 GRATES
ARRAYED
scale 1:30



BOTTOM
scale 1:20



(4X) drill point
to locate bolt dn. hole

typ. short con. rib
typ. mid lat. rib ~ 3" o.c.

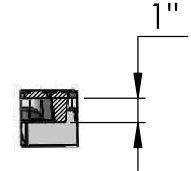
typ. Face thk.
0.344"

44.125"

23.9375"



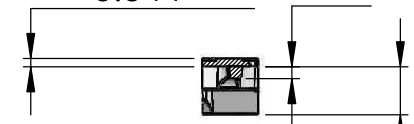
SECTION A-A



X CUT @ MID
LATERAL RIB
scale 1:8

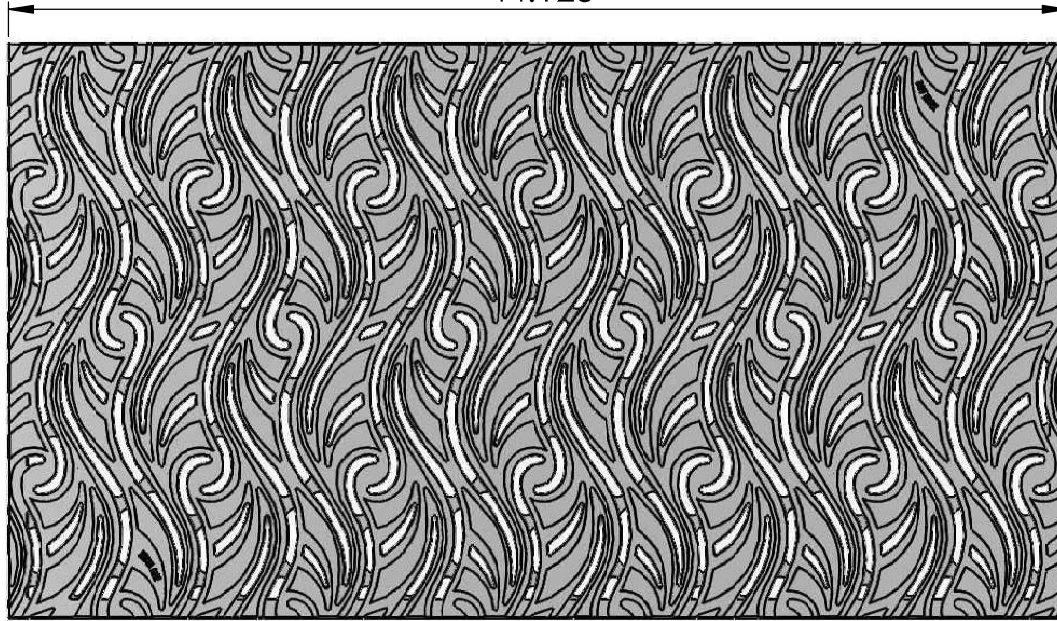
typ. front thk.
0.344"

0.5"



2" tall central rib

X CUT @ SHORT
CONNECTING RIB
scale 1:8



TOP
scale 1:8

2.344" @ End Rib
2.75" O.A. Height



EDGE
scale 1:8

(8X) 3/8" tall feet

2.344" @ Edge Rib

IRON AGE 2104 SW 152nd St #4 TEL 206.276.0925
DESIGNS Burien, WA 98166 FAX 206.257.0318
www.ironagedesigns.com

NOTES:

1. Material: cast ductile iron
2. Finish: natural
3. Heavy Duty 5000-7500 lb Live Load
4. Approx. Weight: 170 lbs
5. Fits Frame by Iron Age™

Minnione 24"x44" Heavy-Duty
Trench Grate

Drawn by: CD
Date: 9/30/15
Scale: NTS

DWG. NO. MIN.1.24x44

© 2015 Iron Age Designs