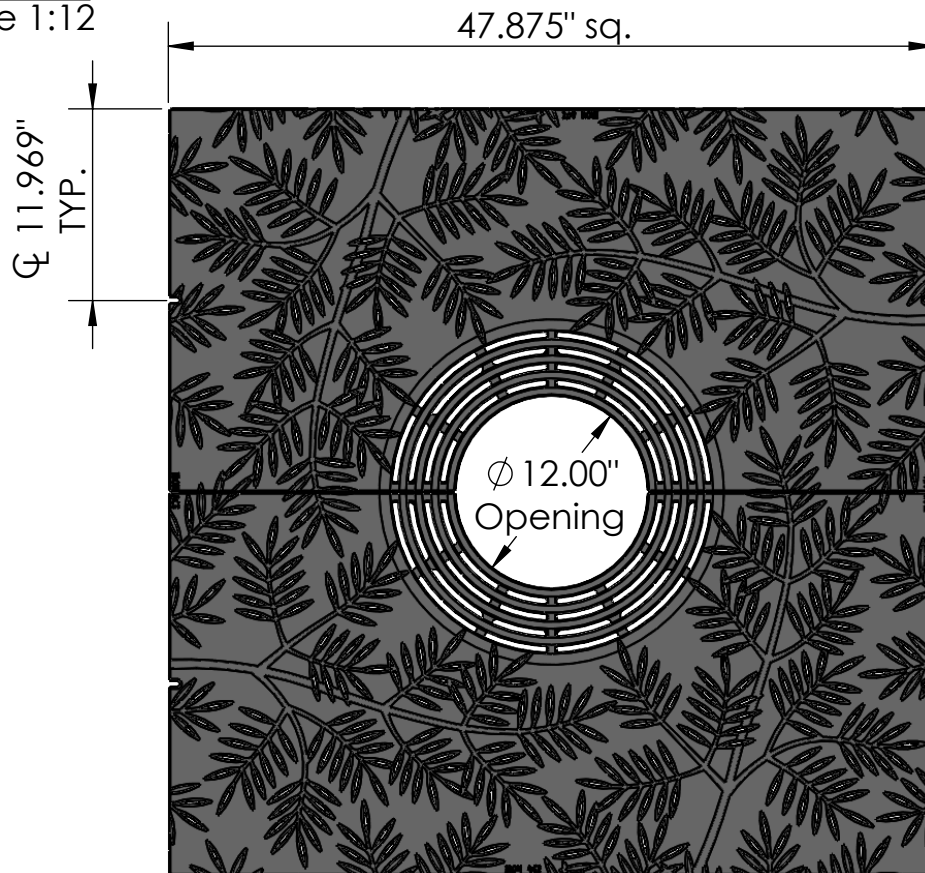
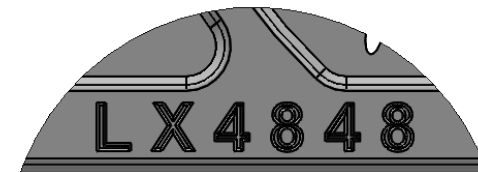


TOP VIEW
scale 1:12

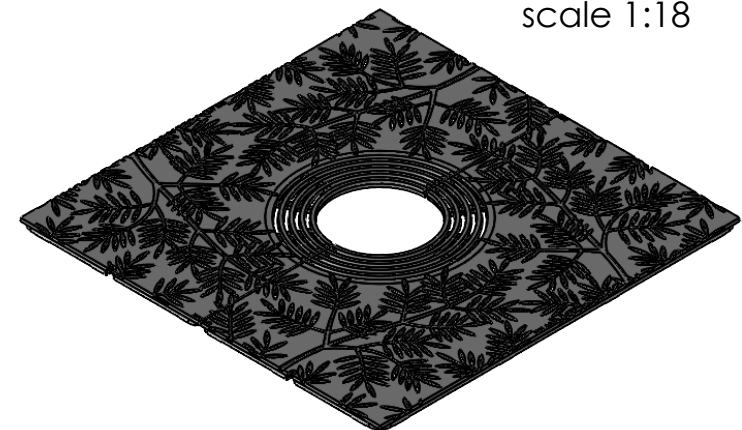


CASTING-ID
scale 1:2



1/4"-20 (4x)
Pan Head
STD-Bolt

ISO-VIEW
scale 1:18



SIDE VIEW
scale 1:12




NOTES:

1. Heelproof: No thru openings greater than ¼".
2. Pieces per Set: 2
3. Due to casting inconsistencies, all dimensions are nominal.
4. Center Opening Options:
Cast at 12", Breakouts at 14", 16", 18" & 20".
5. Pedestrian Load Only.

Made in USA

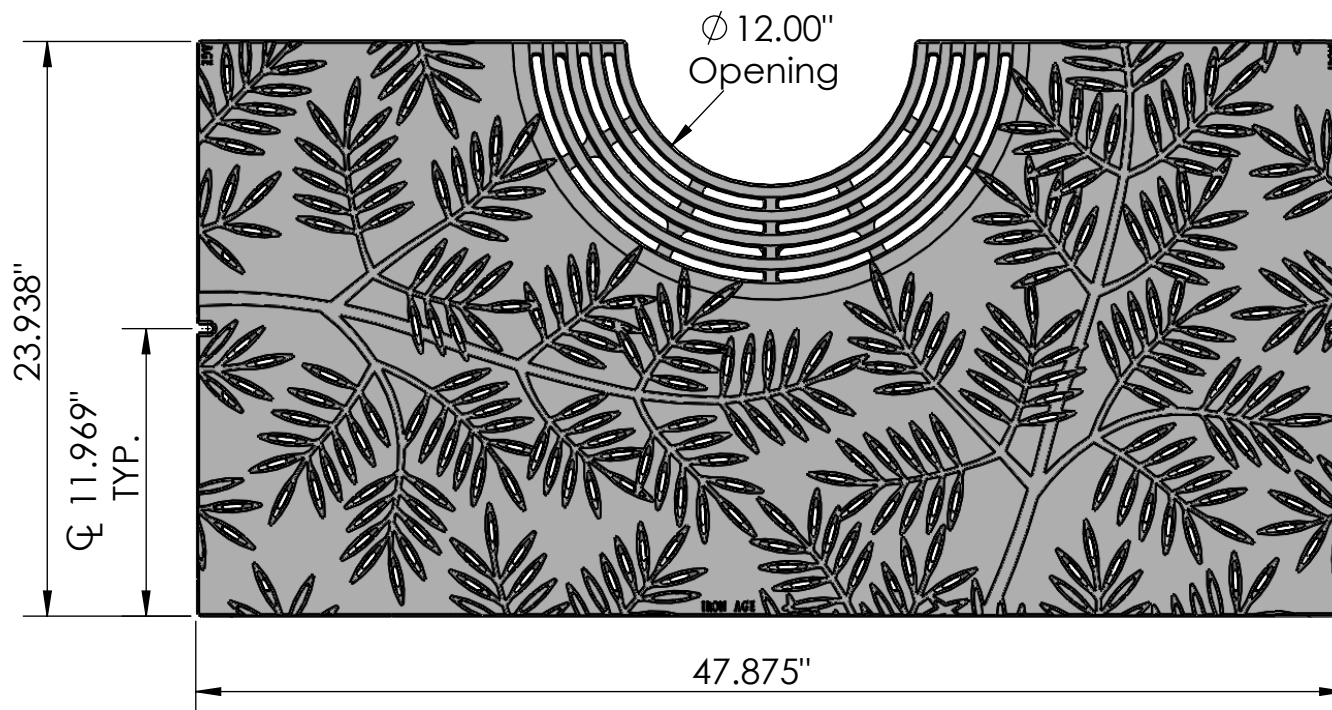
©2009 Iron Age Designs

Locust 4' x 4' Tree Grate Heel Proof

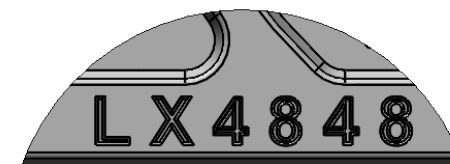
 IRON AGE DESIGNS Telephone 206.276.0925 www.ironagegrates.com	Material: Cast Iron CL 35 or better	Weight: 250.80 lbs.	Free Drain Area: 138.39 in/sq. or 6.35 %	By: MS	Checked: MS	Date: 3-30-21
	Finish: Raw	Edge: 1.000"	Flow Rate: 181.29 GPM	© Registration: VA 2-159-778		Scale: NTS
	Fits: Iron Age Custom Frame SOLD SEPARATELY	Product ID: LX48-48I99TGHP	Drawing Name: 04_LOC_I_48x48HP_TreeGrate_Comp			

Page 1

TOP VIEW
scale 1:8



CASTING-ID
scale 1:2

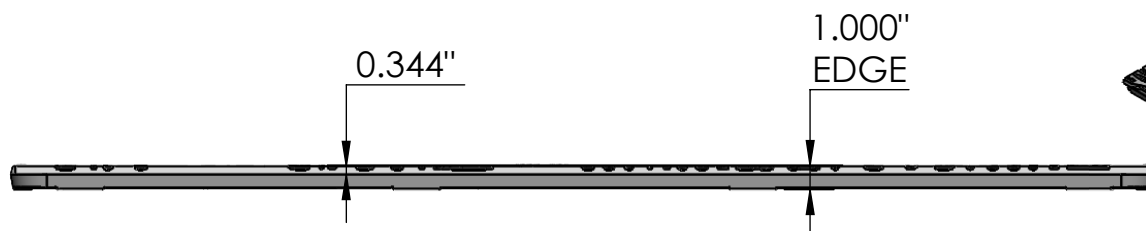


1/4\"-20 (2x)
Pan Head
STD-Bolt

ISO-VIEW
scale 1:10



SIDE VIEW
scale 1:8




NOTES:

1. Heelprof: No thru openings greater than 1/4\".
2. Due to casting inconsistencies, all dimensions are nominal.
3. Pedestrian Load Only.

Made in USA

©2009 Iron Age Designs

Locust 4' x 4' Tree Grate Heel Proof - Half Panel

 IRON AGE DESIGNS Telephone 206.276.0925 www.ironagegrates.com	Material:	Cast Iron CL 35 or better	Weight:	125.40 lbs.	Free Drain Area:	69.19 in/sq. or 6.35 %	By: MS	Checked: MS	Date: 3-30-21
	Finish:	Raw	Edge:	1.000"	Flow Rate:	90.64 GPM	© Registration: VA 2-159-778		Scale: NTS
	Fits:	Iron Age Custom Frame SOLD SEPARATELY	Product ID: LX48-48I99TGHP	Drawing Name: 04-LOC_I_48x48HP_TreeGrate					

Page 2