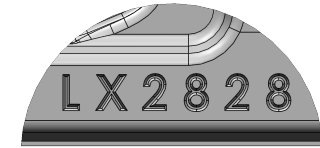
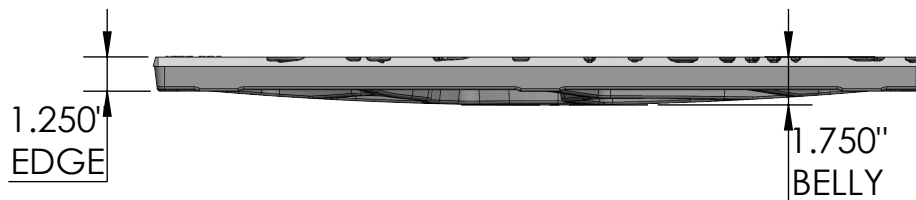


**TOP VIEW**  
scale 1:4

Q 14.125"  
From outer edge  
of grate TYP.



**SIDE VIEW**  
scale 1:4



**CASTING-ID**  
scale 1:2



**ISO-VIEW**  
scale 1:15

**NOTES:**

1. ADA Compliant: No thru openings greater than 1/2".
2. Ships in pieces: 1
3. Due to casting inconsistencies, all dimensions are nominal.

Made in USA ©2020 Iron Age Designs

**Locust 28"x 28" Catch Basin Grate - Heel Proof**

**IRON AGE**  
**DESIGNS**  
Telephone 206.276.0925  
www.ironagegrates.com

<b>Material:</b> Ductile Iron 65-45-12	<b>Weight:</b> 108.4 lbs.	<b>Free Drain Area:</b> 50.92 in/sq.	6.38 %	<b>By:</b> MS	<b>Checked:</b> MS	<b>Date:</b> 12-2-22
<b>Finish:</b> Raw	<b>Edge:</b> 1.250"	<b>Flow Rate:</b> 66.70 GPM	0.14 CuFt./sec.	<b>© Registration:</b> Pending	<b>Scale:</b> NTS	
<b>Fits:</b> Iron Age Custom Frames SOLD SEPARATELY	<b>Product ID:</b> LX28-28I99HP	<b>Drawing Name:</b> 04_LOC_I_28.25x28.25HP_CatchBasin				