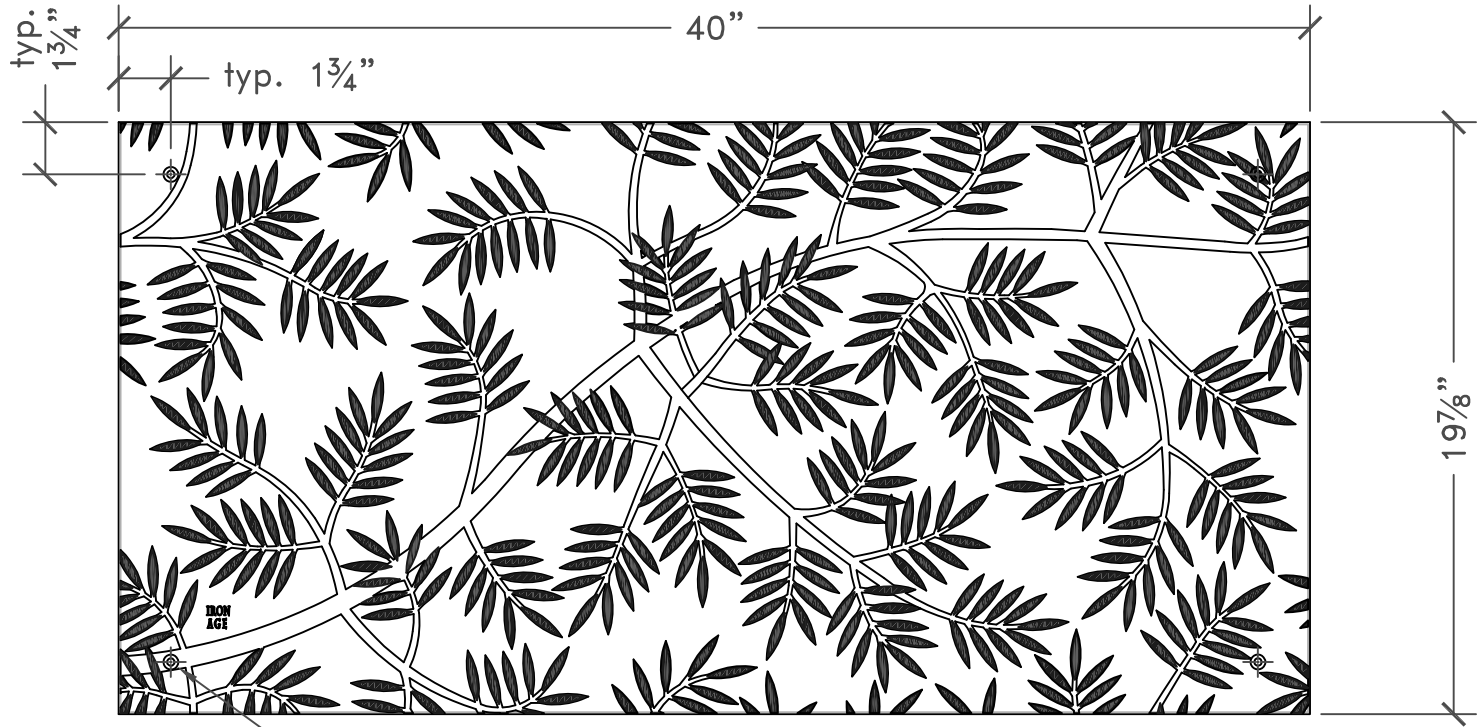
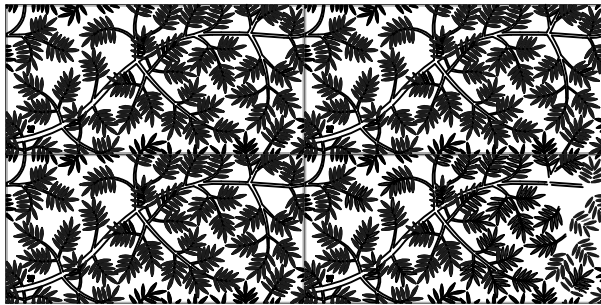


TOP



(4X) hole for 1/4"Ø bolt-dn.

4 castings arrayed  
scale 4:1



NOTES:

1. Material: cast ductile iron, natural finish
2. 1 piece, total thickness: 1 1/4"
3. No openings > 1/4"
4. Grates will be designed to support the load expectation based on being supported on four sides. Please provide load info.
5. Due to casting inconsistencies, all dimensions are nominal.

 **IRON AGE**  
DESIGNS

2104 SW 152nd St. #4 TEL 206.276.0925  
Burien, WA 98166 FAX 206.257.0318  
www.ironagegrates.com

Locust 20"x40" Heel-Proof Trench Grate

job no.

drawing no. 04a-Deck-A

drawn by: CD  
scale: NTS  
date: 04/24/09

© 2009 Iron Age Designs