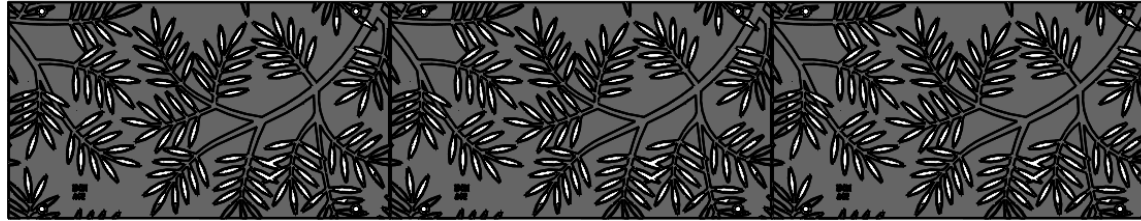
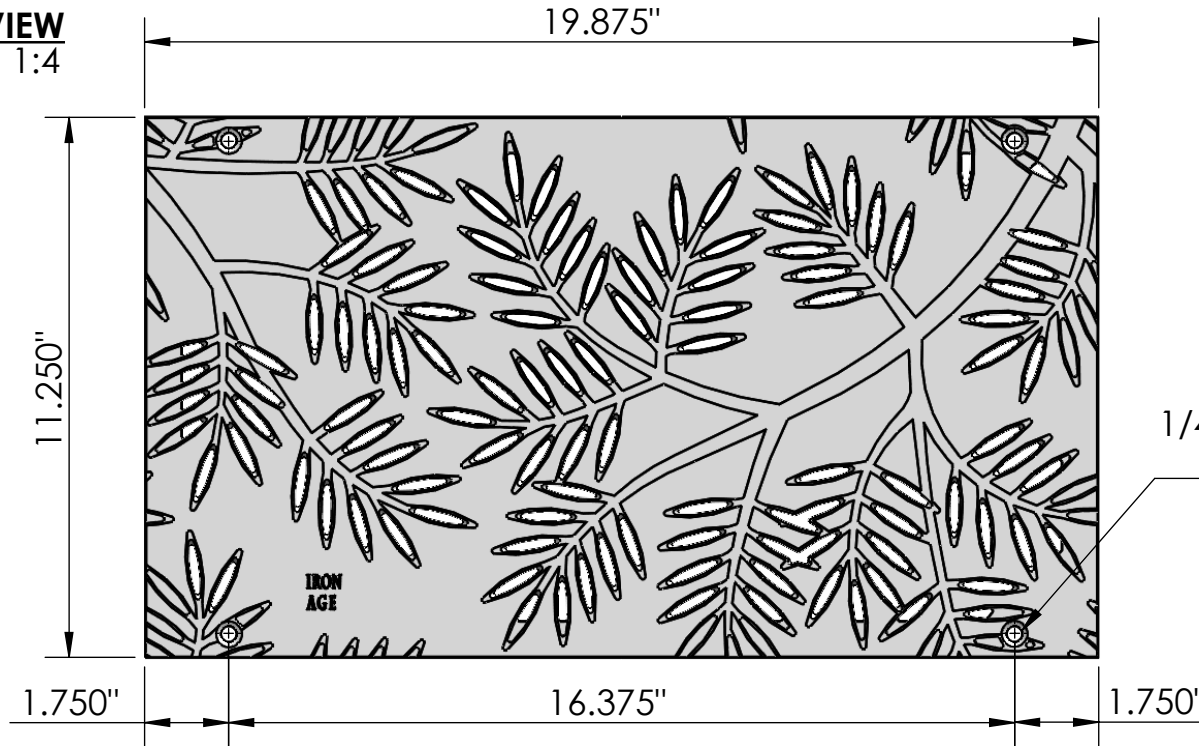


3 ARRAY
scale 1:10



TOP VIEW
scale 1:4

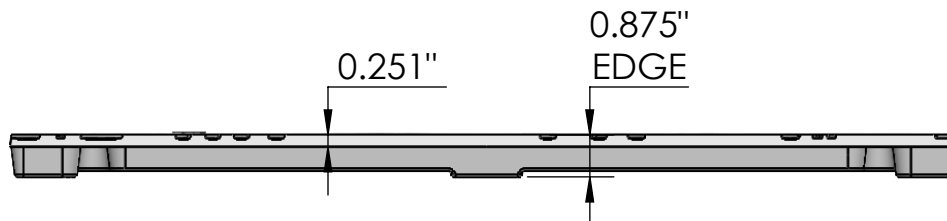


1/4"-20 Pan Head
STD Bolt (4x)



ISO-VIEW
scale 1:8

SIDE VIEW
scale 1:4




NOTES:

1. Heelproof: No thru openings greater than 1/4".
2. Ships in pieces: 1
3. Due to casting inconsistencies, all dimensions are nominal.

Made in USA ©2006 Iron Age Designs

Locust 12"x 20" Trench Grate - Heel Proof

 IRON AGE DESIGNS Telephone 206.276.0925 www.ironagegrates.com	Material: Ductile Iron 65-45-12	Weight: 19.22lbs.	Free Drain Area: 19.02 in/sq., or 8.50 %	By: MS Checked: MS Date: 5-10-22
	Finish: Raw	Edge: 0.875"	Flow Rate: 24.91 GPM, or .055 CuFt./sec.	© Registration: VA 1-814-263 Scale: NTS
	Fits: Iron Age Custom Frames SOLD SEPARATELY	Product ID: LX12-20I99HP	Drawing Name: 01_LOC_I_12x20_TrenchGrate_Iron	