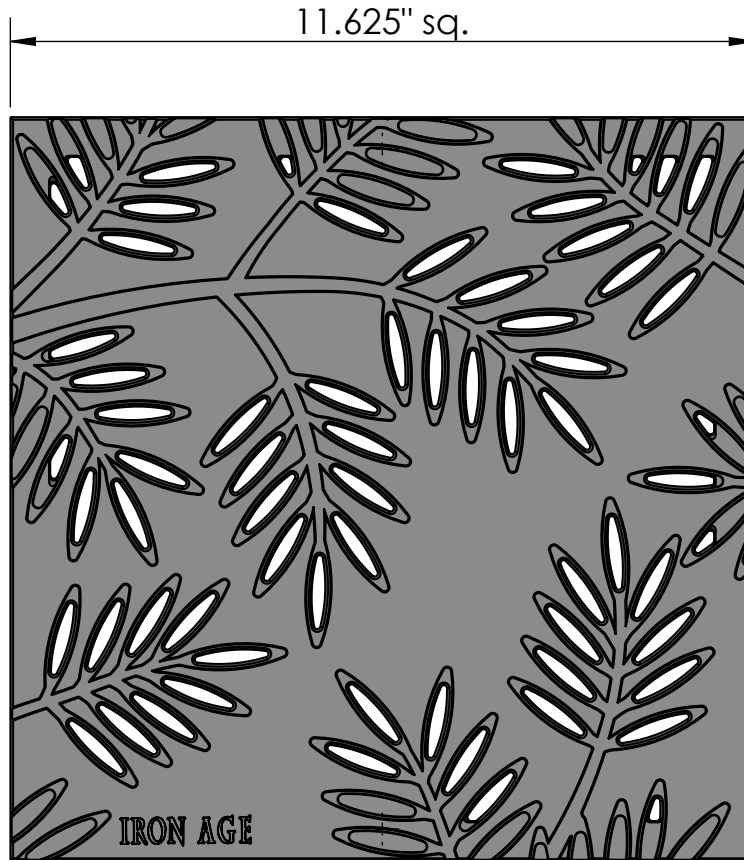


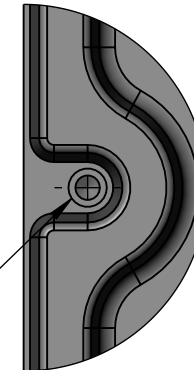
TOP VIEW
scale 1:3



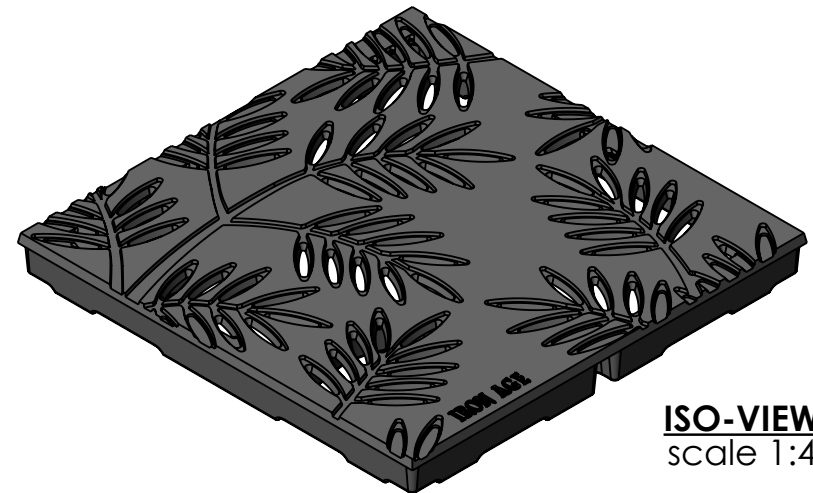
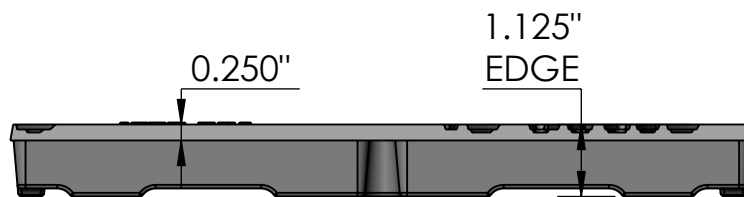
CASTING-ID
scale 1:2



Drill Points (2x)
in Back



SIDE VIEW
scale 1:3



ISO-VIEW
scale 1:4


NOTES:

1. Heelproof: No thru openings greater than ¼".
2. Ships in pieces: 1
3. Due to casting inconsistencies, all dimensions are nominal.

Made in USA

©2017 Iron Age Designs

Locust 12" x 12" Catch Basin Grate - Heel Proof

 IRON AGE DESIGNS Telephone 206.276.0925 www.ironagegrates.com	Material: Ductile Iron 65-45-12	Weight: 14.16 lbs.	Free Drain Area: 11.37 in/sq., or 8.41 %	By: MS	Checked: MS	Date: 1-12-23
	Finish: Raw	Edge: 1.125"	Flow Rate: 14.90 GPM, or .033 CuFt./sec.	© Registration: VA 2-329-954		
	Fits: NDS® 1200 Series	Product ID: LN12-12I12HP	Drawing Name: 01_Loc_N_12x12HP_CatchBasin_Iron			