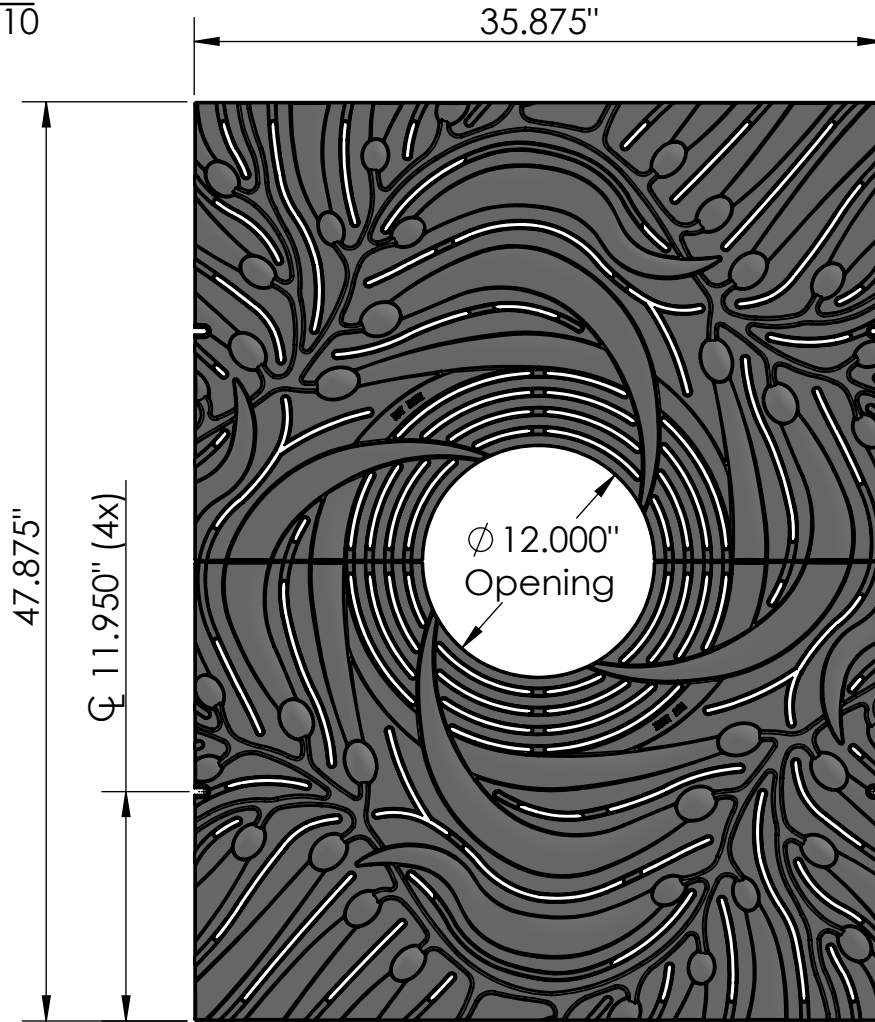
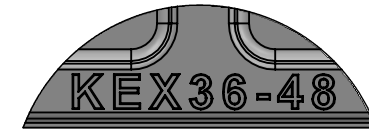


TOP VIEW
scale 1:10

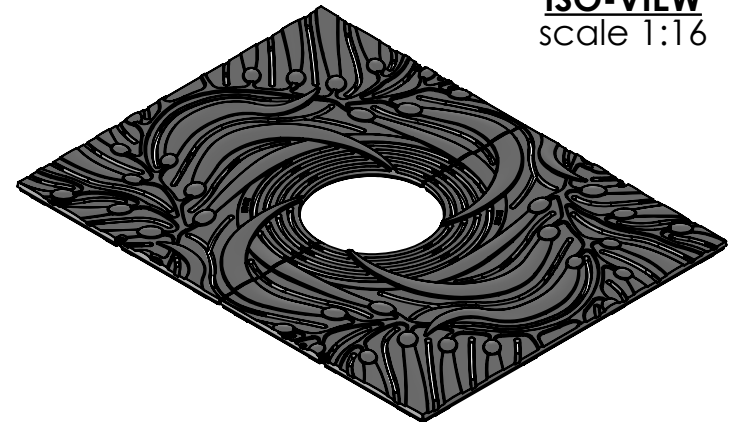


CASTING-ID
scale 1:2

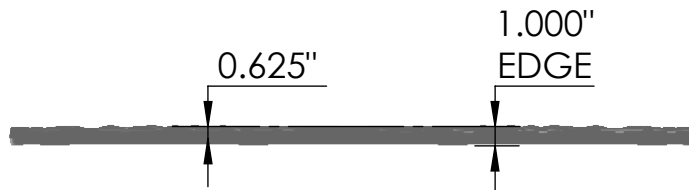


1/4"-20 (4x)
Pan Head
STD-Bolt

ISO-VIEW
scale 1:16



SIDE VIEW
scale 1:10



Kelp 3' x 4' Tree Grate

NOTES:

1. ADA Compliant: No thru openings greater than ½".
2. Pieces per Set: 2
3. Due to casting inconsistencies, all dimensions are nominal.
4. Center Opening Options:
Cast at 12", Breakouts at 14", 16", 18" & 20".
5. Pedestrian Load Only.

Made in USA

©2009 Iron Age Designs

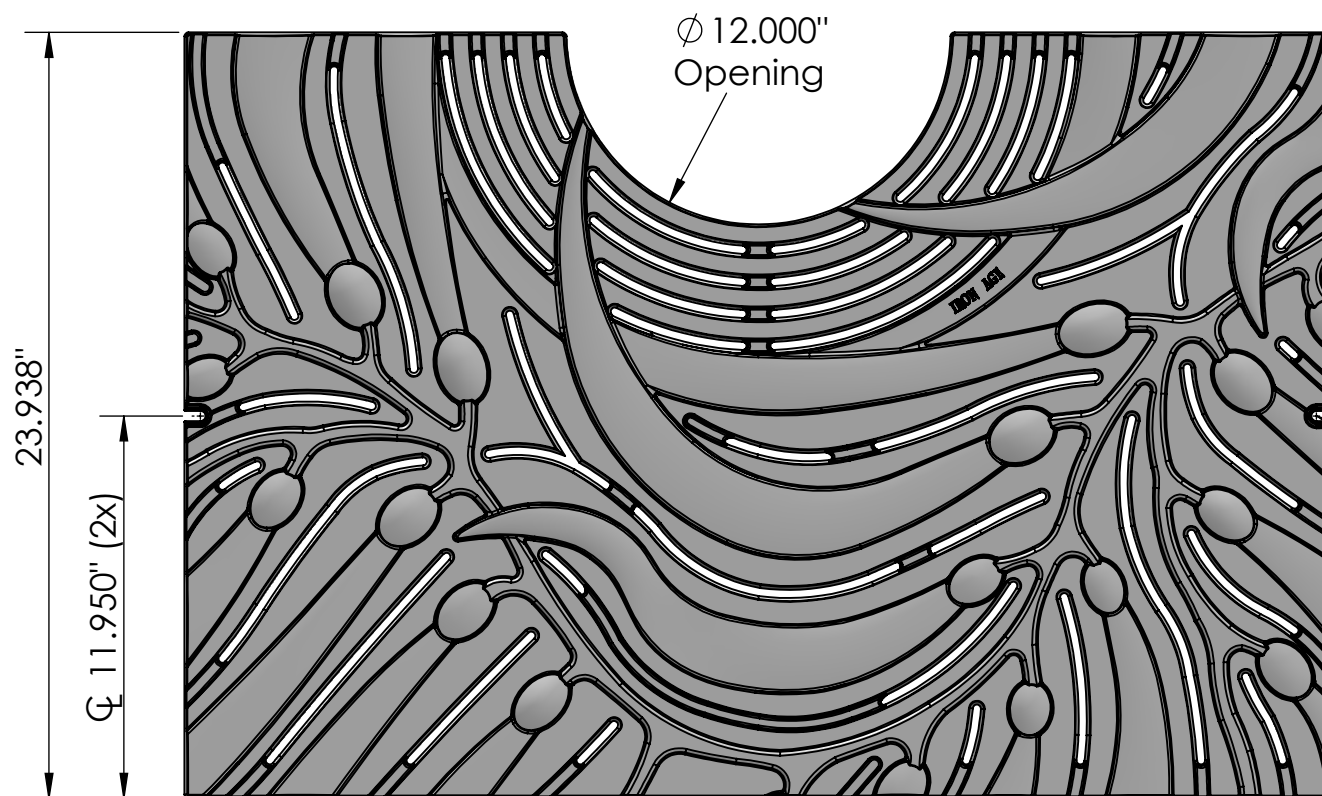


**IRON AGE
DESIGNS**

Telephone 206.276.0925
www.ironagegrates.com

Material: Ductile Iron 65-45-12 or better	Weight: 182.36 lbs.	Free Drain Area: 109.51 in/sq. or 6.46 %	By: MS	Checked: MS	Date: 3-25-21
Finish: Raw	Edge: 1.000"	Flow Rate: 132.44 GPM	© Registration: Pending	Scale: NTS	
Fits: Iron Age Custom Frame SOLD SEPARATELY	Product ID: KEX36-48I99TG	Drawing Name: 02_KEX_I_36x48_TreeGrate_Comp			

TOP VIEW
scale 1:6

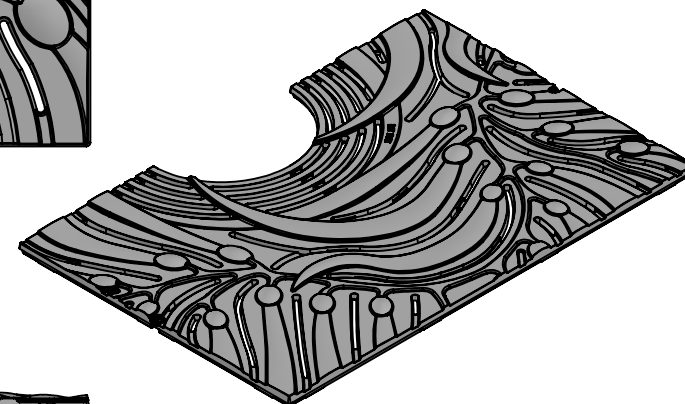


CASTING-ID
scale 1:2

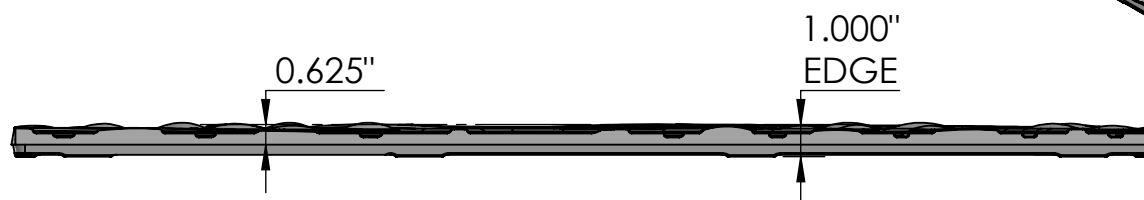


1/4"-20 (2x)
Pan Head
STD-Bolt

ISO-VIEW
scale 1:12



SIDE VIEW
scale 1:6




NOTES:

1. ADA Compliant: No thru openings greater than ½".
2. Due to casting inconsistencies, all dimensions are nominal.
3. Pedestrian Load Only.

Made in USA

©2009 Iron Age Designs

Kelp 3' x 4' Tree Grate - Half Panel

 IRON AGE DESIGNS Telephone 206.276.0925 www.ironagegrates.com	Material: Ductile Iron 65-45-12 or better	Weight: 91.18 lbs.	Free Drain Area: 50.55 in/sq. or 6.46 %	By: MS Checked: MS	Date: 3-25-21
	Finish: Raw	Edge: 1.000"	Flow Rate: 66.22 GPM	© Registration: Pending Scale: NTS	
	Fits: Iron Age Custom Frame SOLD SEPARATELY	Product ID: KEX36-48I99TG	Drawing Name: 02_KEX_I_36x48_TreeGrate		

Page 2