

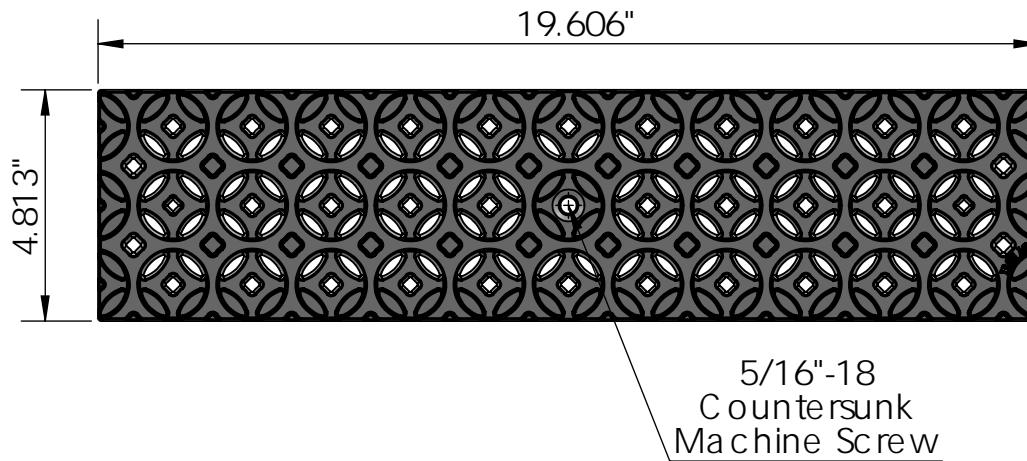
3 ARRAY

scale 1:7



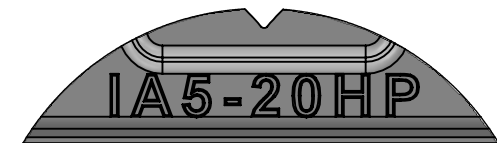
TOP VIEW

scale 1:4



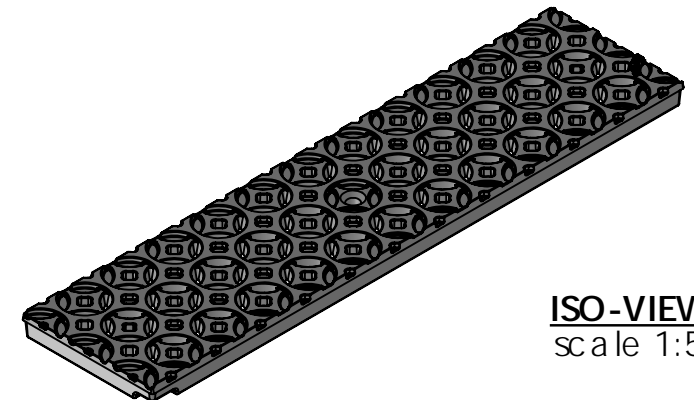
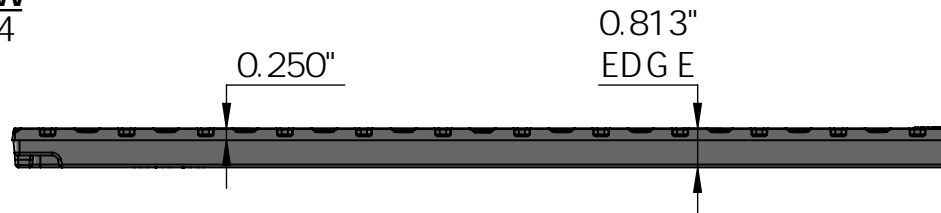
CASTING-ID

scale 1:2



SIDE VIEW

scale 1:4



ISO-VIEW


scale 1:5

NOTES:

1. Heelproof: No thru openings greater than 1/4".
2. Ships in pieces: 1
3. Due to casting inconsistencies, all dimensions are nominal.

Made in USA © 2012 Iron Age Designs

Interlaken 5' x 20' Trench Grate - Heel Proof

 IRON AGE DESIGNS Telephone 206.276.0925 www.ironagegrates.com	Material: Ductile Iron 65-45-12		Weight: 10.00lbs	Free Drain Area: 8.84 in/sq., or 9.37 %	By: MS	Checked: MS	Date: 7-8-25
	Finish: Raw		Edge: 0.813"	Flow Rate: 11.58 GPM, or .025 CuFt./sec.	© Registration: VA 2-159-677		
	Fits: ABT®PolyDrain® ACO™ K100, K100S, KS100 MEA®1000 Series		Product ID: IA5-20I21HP	Drawing Name: 03_INT_A_5x20_TrenchGrate_Iron			
				Page 1			