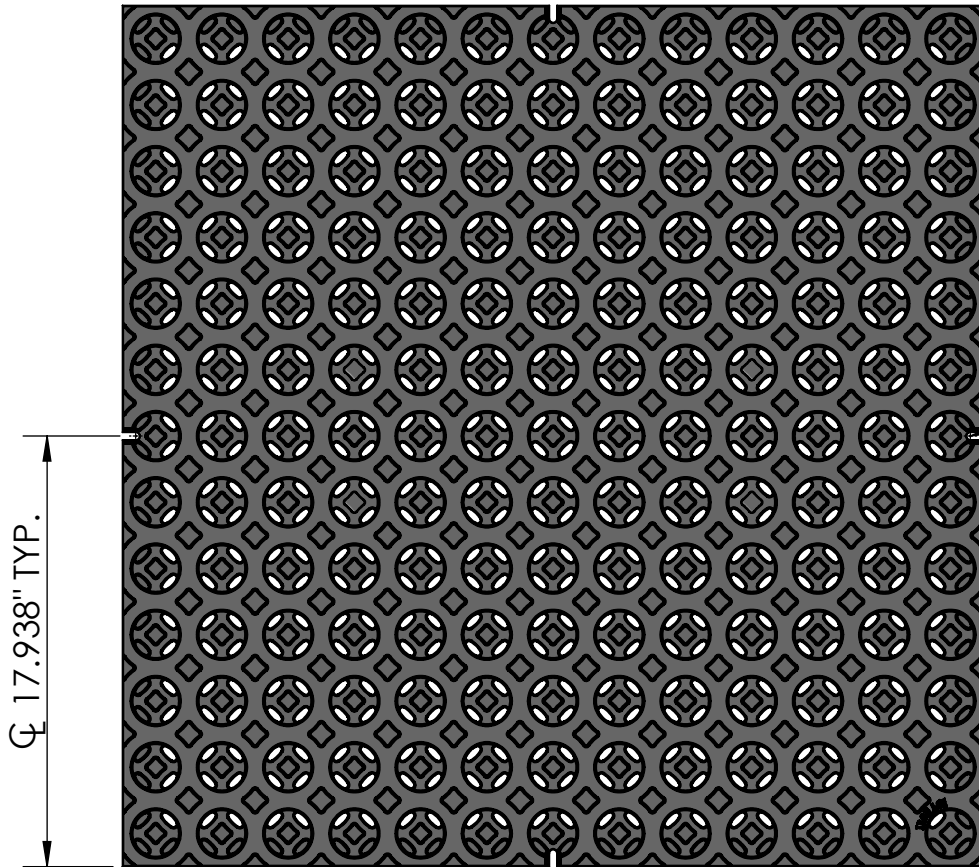
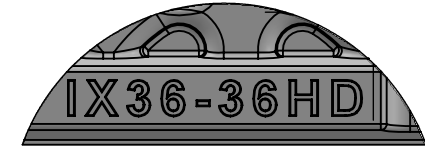


**TOP VIEW**  
scale 1:8

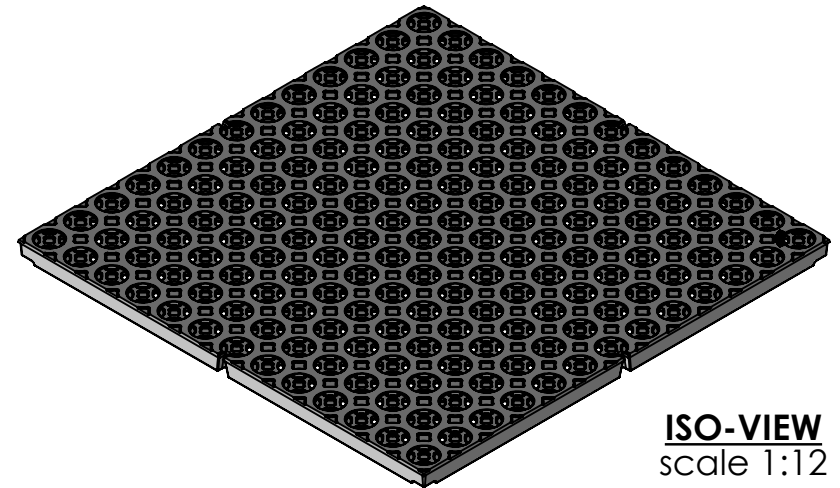
35.875" sq.



**CASTING-ID**  
scale 1:2

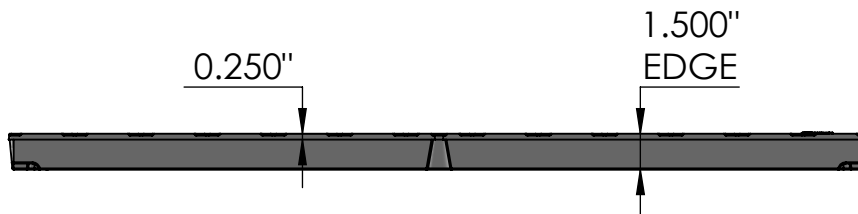


1/4"-20 (4x)  
Pan Head  
STD-Bolt



**ISO-VIEW**  
scale 1:12

**SIDE VIEW**  
scale 1:8




**NOTES:**

1. ADA Compliant: No thru openings greater than 1/2".
2. Ships in pieces: 1
3. Due to casting inconsistencies, all dimensions are nominal.

Made in USA ©2021 Iron Age Designs

**Interlaken 36" x 36" Catch Basin Grate - Heavy Duty**

 <b>IRON AGE DESIGNS</b> Telephone 206.276.0925 www.ironagegrates.com	<b>Material:</b> Ductile Iron 65-45-12	<b>Weight:</b> 218.00 lbs.	<b>Free Drain Area:</b> 110.71 in/sq., or 8.60 %	<b>By:</b> MS <b>Checked:</b> MS <b>Date:</b> 3-26-24
	<b>Finish:</b> Raw	<b>Edge:</b> 1.500"	<b>Flow Rate:</b> 145.03 GPM, or .323 CuFt./sec.	<b>© Registration:</b> VA 2-330-118 <b>Scale:</b> NTS
	<b>Fits:</b> Iron Age CustomFrames SOLD SEPARATELY	<b>Product ID:</b> IX36-36I99HD	<b>Drawing Name:</b> 01_INT_I_36x36HD_CatchBasinGrate	