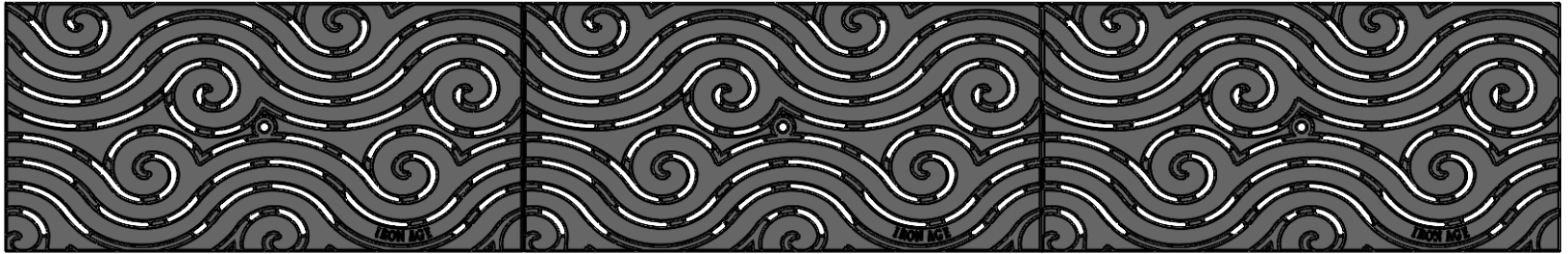
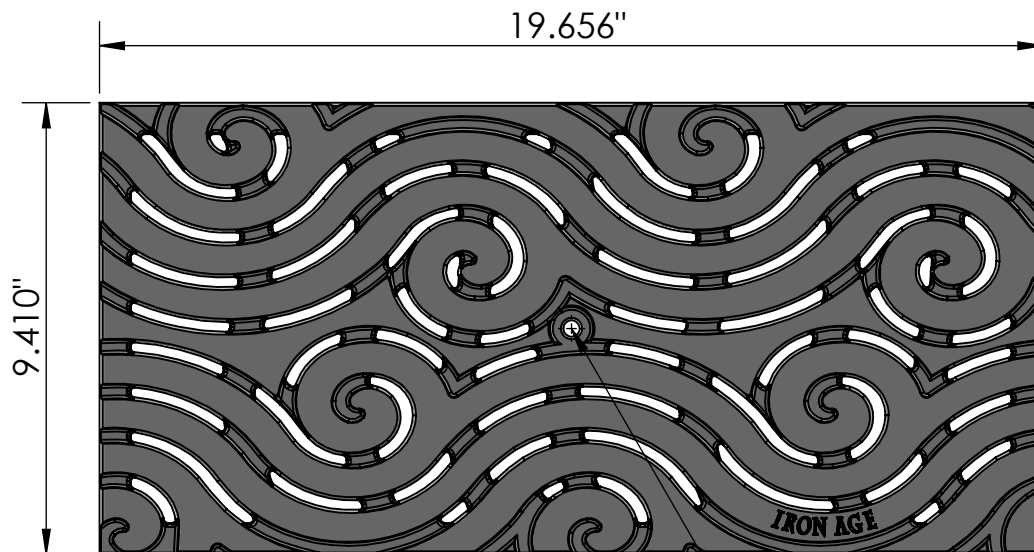


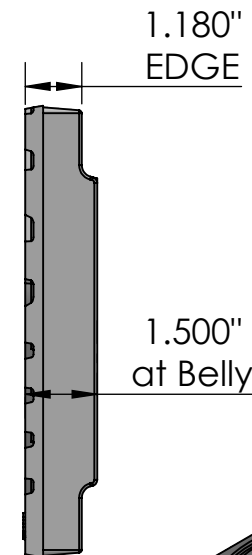
3 ARRAY
scale 1:7



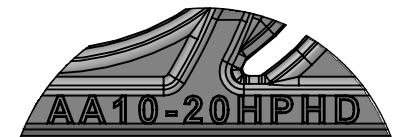
TOP VIEW
scale 1:4



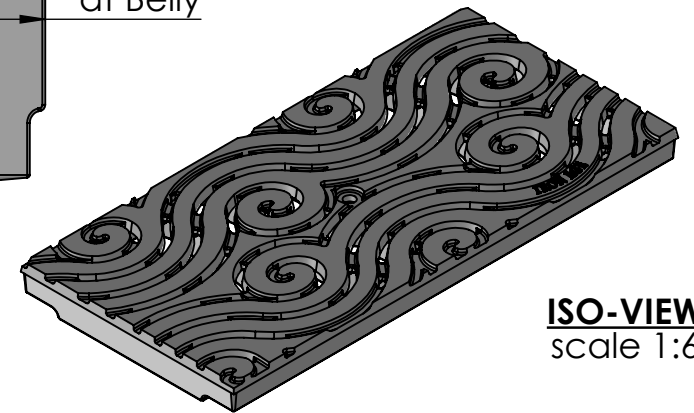
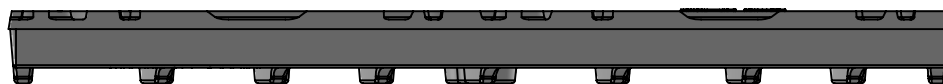
END VIEW
scale 1:4



CASTING-ID
scale 1:2



SIDE VIEW
scale 1:4




ISO-VIEW
scale 1:6

NOTES:

1. Heelproof: No thru openings greater than 1/4".
2. Ships in pieces: 1
3. Due to casting inconsistencies, all dimensions are nominal.

Made in USA ©2016 Iron Age Designs

Argo 10" x 20" Trench Grate - Heel Proof - Heavy Duty

 IRON AGE DESIGNS Telephone 206.276.0925 www.ironagegrates.com	Material: Ductile Iron 65-45-12	Weight: 31.00 lbs.	Free Drain Area: 22.54 in/sq., or 12.18 %	By: MS	Checked: MS	Date: 7-30-24
	Finish: Raw	Edge: 1.180"	Flow Rate: 29.53 GPM, or .065 CuFt./sec.	© Registration: VA 2-246-539		
	Fits: ACO™ K200	Product ID: AA10-20124HPHD	Drawing Name: 02_ARG_A_9.5x19.6HPHD_TrenchGrate_Iron			